



Jervis Bay Marine Park: zoning plan review report

Appendix 2: Summary of stakeholder consultations and submissions

Published by: Marine Parks Authority New South Wales

Recommended citation: Marine Parks Authority 2009, *Jervis Bay Marine Park: zoning plan review report. Appendix 2: Summary of stakeholder consultations and submissions*

Available from: Jervis Bay Marine Park, 4 Woollamia Rd, Huskisson NSW 2540 or www.mpa.nsw.gov.au

Ph: (02) 4428 3000

Email: jervis.bay@mpa.nsw.gov.au

© State of NSW and NSW Marine Parks Authority

The NSW Marine Parks Authority is pleased to allow this material to be reproduced in whole or in part, provided the meaning is unchanged and its source, publisher and authorship are acknowledged.

DECC 2009/234

ISBN 978 1 74232 145 5

April 2009

Printed on environmentally sustainable stock

Contents

Executive summary

Part A: Consultations with stakeholders	1
1. Introduction	1
2. Business community	2
2.1 Commercial tour operators	2
2.2 Huskisson Chamber of Commerce	3
2.3 Jervis Bay Tourism Association	4
3. Commercial fishers	5
3.1 Commercial fishers focus group – Greenwell Point	5
3.2 Commercial fishers focus group – Huskisson	6
3.3 Commercial fishers meeting – Lake Illawarra	7
4. Community consultative bodies	9
4.1 Callala Bay Progress Association	9
4.2 Currarong Progress Association	9
4.3 Huskisson Woollamia Community Voice	10
4.4 Hyams Beach Progress Association	10
4.5 St Georges Basin Community Forum	10
4.6 Sussex Inlet Community Forum	11
4.7 Vincentia Residents and Ratepayers Association	11
5. Conservation	12
5.1 Conservation focus group – Huskisson	12
5.2 Peak conservation groups – Sydney	14
6. Indigenous groups	16
6.1 Jerrinja Aboriginal Community	16
6.2 Nowra Local Aboriginal Land Council	18
6.3 Wreck Bay Aboriginal Community	18
7. Marine science	20
7.1 Marine science focus group	20
8. Recreational fishers	22
8.1 Recreational fishers focus group – Callala Bay	22
8.2 Recreational fishers focus group – Huskisson	24
8.3 Recreational fishers focus group – Nowra	25
8.4 Spearfishers and free divers focus group	27
9. Sailing	29
9.1 Sailing focus group	29

10. Scuba diving	30
10.1 Scuba diving focus group	30
11. Information stalls	34
12. Other meetings and briefings	35
Part B: Submissions	36
1. Introduction	36
1.1 Overview of submissions	36
2. Submissions – general information	38
2.1 Process for recording submissions	38
2.2 Location of respondents	39
2.3 Age of respondents	39
2.4 Main interests in the marine park	39
2.5 Views on conserving Jervis Bay Marine Park	40
2.6 Support for sanctuary zones in Jervis Bay Marine Park	41
3. Summary of comments on marine park zones	42
4. Comments on sanctuary zones	43
4.1 Sanctuary zones overall	43
4.2 Sanctuary zones by location	44
5. Comments on habitat protection zones	51
5.1 Habitat protection zones overall	51
5.2 Habitat protection zones by location	51
6. Comments on general use zones	55
6.1 General use zones overall	55
6.2 General use zones by location	55
7. Comments on special purpose zones	57
7.1 Special purpose zones overall	57
7.2 Special purpose zones by location	57
8. Comments on permitted activities within Jervis Bay Marine Park	59
8.1 Anchoring and moorings	59
8.2 Aquaculture	60
8.3 Collecting (scientific, educational, bait, aquarium and seaweed)	60
8.4 Commercial fishing	61
8.5 Cruise ships	62
8.6 Domestic/companion animals	62
8.7 Fish feeding/cleaning	62
8.8 Hovercraft	62
8.9 Personal watercraft	63
8.10 Recreational fishing	63

8.11 Spearfishing	64
8.12 Species that may be taken from habitat protection zones	64
8.13 Threatened species	65
8.14 Vehicle access	65
9. General comments from submissions	66
9.1 Management	66
9.2 Boating facilities	67
9.3 Fishing (recreational/commercial)	68
9.4 Other	68
Appendices	
Appendix 2a:Form letter generated by the Coastal Rights Association	69
Appendix 2b:Form letter generated by the Nature Conservation Council	70
Appendix 2c: Form letter generated by the National Parks Association	71
Appendix 2d:Jervis Bay Marine Park Zoning Plan Review Submission Form	73

Abbreviations

ACoRF	Advisory Council on Recreational Fishing
DECC	Department of Environment and Climate Change NSW
DPI	NSW Department of Primary Industries
GNS	grey nurse shark
GUZ	general use zone
HPZ	habitat protection zone
JBMP	Jervis Bay Marine Park
MoU	memorandum of understanding
MPA	Marine Parks Authority NSW
NSWFCA	NSW Fishing Clubs Association
OHMAC	Ocean Haul Management Advisory Committee
PWC	personal watercraft
SPZ	special purpose zone
SZ	sanctuary zone

Executive summary

Jervis Bay Marine Park on the south coast of NSW and Solitary Islands Marine Park on the mid-north coast of NSW were the first marine parks to be established in NSW. The zoning plan for Jervis Bay Marine Park commenced in 2002 and protects the natural and cultural values of the marine park, while providing for a range of sustainable uses including commercial and recreational fishing, diving, water sports and other activities.

The NSW Government committed to a review of the zoning plan for Jervis Bay Marine Park after five years of operation, and a review has been undertaken in accordance with section 17D of the *Marine Parks Act 1997*.

Public consultation for the zoning plan review ran for two months in April and May 2008. During this period, 41 formal meetings were held with individuals and stakeholder groups, including information sessions with the community, presentations to local community groups and focus group meetings. Several meetings were also held in the month before the official public consultation phase to discuss the review with adjacent land managers and local community leaders.

Meetings	Location	Number of community attendees
Commercial tour operators	Huskisson Community Centre	10
Huskisson Chamber of Commerce	Fresh café, Huskisson	15
Jervis Bay Tourism Association	Huskisson Community Centre	3
Commercial fishers – Greenwell Point	Greenwell Point Scout Hall	12
Commercial fishers – Huskisson	Huskisson Community Centre	8
Commercial fishers – Lake Illawarra	DPI – Fisheries Lake Illawarra office	6
Callala Bay Progress Association	Callala Bay Progress Hall	30
Currarong Progress Association	Currarong Community Hall	19
Huskisson Woollamia Community Voice	Huskisson Community Centre	45
Hyams Beach Progress Association	Hyams Beach Rural Fire Service shed	25
St Georges Basin Community Forum	St Georges Basin Community Centre	30
Sussex Inlet Community Forum	Sussex Inlet Community Centre	15
Vincentia Residents and Ratepayers Association	Vincentia Community Centre	40
Conservation – Huskisson	Huskisson Community Centre	6
Peak conservation groups	Botanic Gardens, Sydney	14
Jerrinja Aboriginal Community	The old school house, Roseby Park (Orient Point)	29
Nowra Local Aboriginal Land Council	Meeting room, Nowra Showground	40
Wreck Bay Aboriginal Community	Wreck Bay Community Hall	20
Marine science	Botanic Gardens, Sydney	12
Recreational fishers – Callala Bay	Callala Bay Progress Hall	12
Recreational fishers – Huskisson	Huskisson Community Centre	8

Meetings	Location	Number of community attendees
Recreational fishers – Nowra	Nowra School of Arts	20
Spearfishers and free divers	Huskisson Community Centre	7 (spearfishers)
Sailing	The Postmans Tavern meeting room, Nowra	8
Scuba divers	Huskisson Community Centre	14
TOTAL		448

In addition to focus group meetings, various other mechanisms were used to advertise the zoning plan review and to encourage public comment on the current zoning plan. These included an information package for the review, media releases, advertising, information displays and briefings conducted with individuals and groups. Nearly 400 people attended information days on the review in the Jervis Bay area. Information on the review was made available at local libraries, council offices and other community outlets.

A total of 680 submissions were received from a wide range of interest groups: 648 from individuals and 32 on behalf of organisations. Of the total number of submissions, 34.6% were received from within the local marine park area, 58.9% were received from other areas in NSW and the ACT and 2.6% came from other states or overseas (3.9% did not provide a postcode).

On the submission form, respondents were asked to identify their main interests in the marine park, and many indicated several interests:

Main interest	No. of responses
Recreational fishing	247
Swimming	216
Beach activities	202
Recreational boating	189
Snorkelling	171
Conservation	162
Wildlife observation	158
Scenic amenity	158
Kayaking/canoeing	99
Scuba diving	82
Surfing	77
Spearfishing	76
Charter fishing	51
Personal watercraft / water sports	43
Commercial fishing	42
Other	14

Note: the total number of interests exceeds the number of submissions received because individuals were able to identify multiple interests. 'Other' includes visual arts, yacht racing, aquaculture, free diving, shell collecting, access to the coastline, practice of culture and heritage and environment protection activities.

Submission formats varied and included individual and group submissions, letters, emails, form letters, maps, reports and the review submission forms in hardcopy or from the Marine Parks Authority (MPA) website.

Three different form letters (42.5% of total submissions) were received, generated by the Coastal Rights Association (92 submissions), Nature Conservation Council (36 submissions) and the National Parks Association (161 submissions). The MPA did not give any particular weighting to the various formats of the submissions or the numbers received, and has reviewed and considered all of them.

The majority of the submissions originated from the recreational fishing and the environment/conservation sectors.

The most commonly expressed opinions were:

- keep the current zoning plan as it is with no changes
- sanctuary zones should be made larger to incorporate more habitats, better represent examples of habitats and improve protection for threatened species and marine biodiversity
- disagreement with the need for sanctuary zones.
- recreational fishers should have more access because their impact on marine biodiversity is unproven
- grey nurse sharks need increased protection
- commercial fishing, especially beach hauling, purse seine netting and trawling, should be prohibited or reduced
- appropriate boating infrastructure is needed
- signage delineating zone boundaries needs to be improved
- use of personal watercraft (jet skis) should be prohibited or restricted.

This report presents the results of the public consultation and submission components of the zoning plan review and is in two parts: Part A summarises the feedback received from focus group meetings and other public meetings held during the consultation phase of the review; Part B is a summary of the information provided in the submissions received during the review period.

Part A: Consultations with stakeholders

1. Introduction

Part A of this report summarises the information received from focus group meetings and other public meetings held during the review. It does not fully report the detailed information discussed, and individual comments may not be reported 'word for word', but have been aggregated with similar comments or issues. The Jervis Bay Marine Park Advisory Committee generally met on a monthly basis, with the first meeting concerning the zoning plan review held in February 2008.

2. Business community

2.1 Commercial tour operators

Date	29 April 2008
Location	Huskisson Community Centre
Attendance	MPA – Jervis Bay Marine Park (2), local tourism operators (10)

Commercial fishing

- Concern was expressed about the sustainability of commercial fishing within Jervis Bay Marine Park (JBMP), in particular:
 - that trawling was allowed in general use zones
 - the impact of a small-scale large-take activity such as ocean hauling over a short space of time
 - that purse seining be removed as it is little used.
- There is a need to refine commercial fishing catch reporting to identify the level of catch within the marine park.
- A philosophical problem exists with large catch by commercial fishers versus small catch allowed by recreational fishing, and also in that large commercial take can occur right next to a sanctuary zone e.g. the general use zone in Crookhaven Bight (no buffer exists between zone types)
- One commercial fisher can remove all the good work by the Marine Parks Authority (MPA), community and recreational users etc. by going for a big catch when the conditions are just right.

Species/habitat protection

- What percentage of deep reef is included in sanctuary zones within the marine park?
- Sanctuary zone protection for grey nurse shark (GNS) at Drum and Drum Sticks is in the wrong spot; there is a need to identify sites and patterns/cycles of use; sanctuary zones for GNS protection have been suggested to increase their number and size and provide adequate protection.
- To protect intermediate reef habitat: in Crookhaven Bight, extending the Hammer Head sanctuary zone boundary east has been suggested, and in the south of the marine park, extending the St Georges–Steamer Head sanctuary zone north to include Stony Creek has been suggested.
- There is concern that protection is not adequate for Currumbene Creek; there is a need to increase sanctuary zone protection for mullet and other species.
- The adequacy of reef representation in Crookhaven Bight should be reviewed.
- Zoning to protect whales while they are in Jervis Bay during migration should be considered, to limit whale/vessel interactions for both protection and safety.
- A bait ball appears and moves just in/just out of the marine park near the entrance to Jervis Bay. Would be good to protect it somehow as it is used by the penguins etc?

- There is an issue with beach haulers taking breeding aggregations of mullet etc. on their spawning run when they leave sanctuary zone protection e.g. at Carama Inlet and Currumbene Creek.
- Timing – using temporal protection to protect fish during spawning has been suggested.

Education/signage

- Education needs to be considered – tourists want to know ‘What does the marine park mean?’ and ‘Where can I fish?’
- Some land-based signage is difficult to see e.g. at Dart Point.
- It is hard for people to work out where sanctuary zones are, especially if they are new to the area and not familiar with them; keying buoy identification to the zoning plan map is good.
- Education needs to be backed up with compliance to make people stop and think before they act.

Zoning

- What is the purpose of the Hammer Head and St Georges–Steamer Head sanctuary zones?
- Anecdotal information from people is that the marine park and sanctuary zones are working.
- Concern exists about the possible impacts if sanctuary zones were to increase in size.
- Do you have to have general use zones in the marine park or can you make them habitat protection zones?

General

- Questions were asked about the potential amount of aquaculture that is allowed in the marine park.
- Caution is urged against ‘locking up’ areas as sanctuary zones rather than educating people to use the area responsibly as they have done in New Zealand.
- Is there any problem with having artificial reefs located in the marine park in the future?
- There is a need for greater community involvement in managing the marine park and sharing information between the park’s users i.e. recreational divers, fishers, boat owners and the MPA.

2.2 Huskisson Chamber of Commerce

Date	19 May 2008
Location	Fresh café, Huskisson
Attendance	MPA – Jervis Bay Marine Park (1), members of the Huskisson Chamber of Commerce (15)

Comments

- There is strong interest in developing a marina or boating harbour in Huskisson, which the group do not want to see limited by the zoning plan.

2.3 Jervis Bay Tourism Association

Date	30 April 2008
Location	Huskisson Community Centre
Attendance	MPA – Jervis Bay Marine Park (2); Jervis Bay Tourism Association (3)

General

- High-level land development would alienate tourists.
- What are the opportunities for aquaculture in Jervis Bay?
- Is it possible to sink a boat for an artificial reef, rather than the structures being proposed by the NSW Department of Primary Industries (DPI)? Artificial reefs attract fish and give divers something to look at.
- Most tourists do not like jet skis.

Education/signage

- Tourists like to understand the natural environment and know the rules.
- Marine parks are not as easy for tourists to interpret as terrestrial parks.
- Think about including snorkel trails and/or bottom signage in sanctuary zones to enhance the experience.
- There is a need for interpretive signage or activities to enhance visitors' experience. This could include a snorkel trail with signage in a sanctuary zone.

Marina

- Improving boating facilities would promote recreation in Jervis Bay.
- A possible location for a marina could be Collingwood Beach.
- Is Huskisson sanctuary zone likely to be removed to provide for a marina?

Species/habitat protection

- The seal colony at Lamond Head should be given more protection – it could be included in whale or dolphin watching tours, to improve the experience.
- Drum and Drum Sticks sanctuary zone is too small.

3. Commercial fishers

3.1 Commercial fishers focus group – Greenwell Point

Date	23 April 2008
Location	Greenwell Point Scout Hall
Attendance	MPA – Jervis Bay Marine Park (3), DPI (2), commercial fishers (12)

General

- Any changes to the zoning plan could affect the viability of several commercial fishing businesses. Fishers would like the opportunity to be involved in further consultation if changes are proposed.
- More public information is needed, to inform people that commercial fishers can drive their vehicles on the beaches when they are working, as well as more education about the fact that commercial fishing is permitted within the marine park. Perhaps there is a need to set up a register for fishers to inform JBMP staff and DPI when they are working on the beaches – this could help with public relations and compliance. There is a need to improve the communication between fishers and the MPA.
- A question was asked about whether any other stakeholder group has the same financial disadvantage imposed on them as commercial fishers e.g. are they prevented from working weekends?
- There are only two small general use zones where droplining is permitted – this is not viable for commercial fishers using this method.
- A suggestion was made to extend the general use zone along Bowen Island or Longnose Point for droplining.
- There is a need to revisit the removal of the splashing method of commercial estuary mesh netting from Currumbene Creek – perhaps look at re-opening this for a period of 12 weeks.
- If the MPA or DPI will be looking at possible compensation for commercial fishers, they need to use an appropriate time period, such as the three years immediately before the zoning plan was implemented, and the time that the marine park has been in place, and not a historical period of, say, 1986–1991.

Ocean/beach hauling

- The primary issue of concern is the exclusion of some beach haulers from the marine park. The majority of ocean haul fishers in Region 6 want access back into marine park waters.
- Fishers have the backing of the Ocean Haul Management Advisory Committee (OHMAC) to support the re-entry of currently excluded fishers back into the marine park.
- Other management advisory committees have indicated they want the JBMP commercial fishing provisions changed to become consistent with the rules of access to other marine parks in NSW.
- Excluded fishers will be looking at pursuing the issue of compensation for those fishers that have been, or may continue to be, disadvantaged as a result of the zoning plan arrangements.

- In terms of the current restrictions, locally based ocean haulers would like to see:
 - the opening up of the restrictions on not being able to work nights, weekends and public holidays
 - the opportunity to be able to work on weekends during the winter months so they can fish when the fish are not found elsewhere
 - a revisiting of the sunset clause provisions and transferability of permits for commercial fishers
 - current local restrictions on permits maintained.

Purse seining

- Current purse seine areas within Jervis Bay are used when the bait fish are not in the preferred fishing areas around Currarong, or when weather conditions restrict fishing activities outside the bay itself. August and September are the main months when bait is present in the bay.
- In order to make it easier to operate in the marine park, the shape of the current purse seine restricted areas needs to be changed:
 - the Bowen Island purse seine area needs to be made bigger
 - the boundaries of the area in the middle of Jervis Bay do not follow a north–south, east–west orientation, making it hard for the skipper to plot a course that allows them to determine whether they are in or out of the area; a suggestion was made to change the shape of the area to a box shape
 - identification of current areas is difficult because they are not marked with buoys or lights.
- If purse seining was permitted in all habitat protection zones in the marine park, restrictions on operating outside the 15-metre depth contour could be considered, to prevent any possible bottom damage.

3.2 Commercial fishers focus group – Huskisson

Date	22 April 2008
Location	Huskisson Community Centre
Attendance	MPA – Jervis Bay Marine Park (4), DPI (3), commercial fishers (8)

General

- Fishers have learnt to live with the current zoning arrangements and fish around the sanctuaries that currently exist. If new sanctuary zones were introduced, they would have less area in which to fish, which would involve further loss of income.
- If changes are made to the zoning plan, will fishers be entitled to a buy-out or compensation? Fishers need to know whether there will be changes to the plan (or not) so they can decide what to do and where to go.
- When the current zoning plan was drafted there were more general use zones in the draft than in the final plan – so the situation for commercial fishers was worse than they first thought.
- When the current zoning plan was in development, a buy-out process was instigated in April 2002 before the zoning plan was finalised in October 2002. The final zoning plan created a ‘zone within a zone’ (i.e. Region 6) which was not apparent at the time of the buy-out negotiations.

- Some fishers believe that commercial fishers never get what they ask for in planning processes such as this.
- There is a general feeling that recreational fishers have much better access than commercial fishers – who keep having area taken away from them through various processes.
- Does the zoning plan review include looking at removing commercial fishers from the marine park – particularly for those fisheries that currently operate in the park and have sunset clause provisions? Current inconsistencies between the NSW marine parks' regulations with respect to commercial fisheries need to be addressed.
- Should commercial fishers have more of a say in the zoning plan review process, given the long association many fishers have with the area?

Beach hauling

- Beach haulers currently excluded from the marine park would like to see the same arrangements used in JBMP as used in other NSW marine parks i.e. if you have an endorsement to fish within the region then you should be able to fish in the marine park. The group believes there is an equity issue in regard to those that have been allowed to fish in the marine park and those that have not.
- OHMAC endorses the position of those local fishers who can no longer work in the bay – i.e. to have JBMP arrangements the same as those for other marine parks. If the current arrangements continue, the disadvantaged fishers would look at seeking compensation for time lost or look at buy-out options.
- If access was granted to the currently excluded fishers, they would be more than happy to work those beaches that are currently open to beach hauling within the marine park.
- Several fishers stated they didn't think there would be a significant increase in the number of fishers that would use the area if the current restrictions on beach haulers were lifted – there would probably be just a few extra fishers working throughout the year. With the introduction of the Recreational Fishing Havens and JBMP there were approximately 39 commercial fishing businesses left in the area.
- Beach haulers target migratory species only and not those that are resident in the local area.
- Fishers have to work to a strict code of conduct.
- SafeFood NSW says that haulers have a maximum of two hours between landing the fish and getting them on ice – fishers need to have the manpower for this to happen which can be hard under the current rules.

3.3 Commercial fishers meeting – Lake Illawarra

Date	6 May 2008
Location	DPI – Fisheries Lake Illawarra office
Attendance	MPA – Jervis Bay Marine Park (2), DPI (1), commercial fishers (6)

Beach hauling

- Beach haulers:
 - do not support the current arrangements for beach hauling in JBMP and request the current provisions be amended to allow access for all Region 6 commercial fishers

- do not support the concept of a ‘zone within a zone’ – beach hauling management in JBMP should be consistent with other marine parks in NSW
- accept the current zoning as it is, just have an issue with the beach haul regulations.
- The additional restrictive arrangements for beach hauling in JBMP are inconsistent with fisheries management and have created serious inequity.
- The group is concerned about the precedent being set with the current arrangements for beach hauling in JBMP, and that these may be applied to other marine parks in time.
- The group is concerned about an abuse of process in 2002 when additional restrictions for beach hauling were put in place after buy-outs were offered.
- Recent amendments allowing for extra crew are not good enough. Access should be provided for all Region 6 fishers.
- Current restrictions are not an effective means to manage effort – if this was the intention, alternative arrangements should have been considered.

Purse seining

- The group is concerned about current restrictions relating to purse seine bait netting and recommends a comprehensive review be carried out.
- Commonwealth risk assessment of commercial fishing methods has ranked purse seine as low impact, therefore the current arrangements should be reviewed.
- Continued operations were to be subject to socioeconomic and environmental reviews of the impact of the activity. The final report only considered local economic issues and did not consider the strategic significance of Jervis Bay.
- JBMP is strategically important both in terms of location and provision of sheltered waters.
- Current configuration of purse seine areas in Jervis Bay is impossible to enforce and difficult to locate. If they are maintained, they need to be amended.
- Greater access to all habitat protection zones in JBMP should be provided.
- The current limit on permit numbers for purse seining should be maintained.
- Currently, operators have a demonstrated commitment to the fisheries and a low level of access.

4. Community consultative bodies

4.1 Callala Bay Progress Association

Date	14 May 2008
Location	Callala Bay Progress Hall
Attendance	MPA – Jervis Bay Marine Park (1), community members (30)

Comments

- Issues are:
 - the conduct of commercial fishing activities on Callala Beach, especially by beach hauling crews
 - jet ski use – who is responsible for enforcing speed restrictions and use in the marine park?
 - the adequacy of sanctuary zones to protect important habitat types
 - vehicle access on local beaches, particularly by commercial fishers
 - the lack of observed enforcement within the marine park.

4.2 Currarong Progress Association

Date	9 April 2008
Location	Currarong Community Hall
Attendance	MPA- Jervis Bay Marine Park (2), community members (19)

Comments

- Residents and community concerns are:
 - that in order to decrease commercial fishing effort in the marine park, there will be an increase in the number and/or size of sanctuary zones
 - that the sanctuary zone around Currarong is affecting the village, in that people are not permitted to fish locally
 - the loss of access to the sea cliffs by recreational fishers.
- Residents would like to see:
 - commercial fishing activity removed from Currarong and Callala Beaches due to perceived high rates of by-catch associated with the fisheries, in particular beach hauling
 - a small habitat protection zone, similar to that in place at Hyams Beach, implemented at Currarong in the Hammer Head sanctuary zone.

4.3 Huskisson Woollamia Community Voice

Date	14 April 2008
Location	Huskisson Community Centre
Attendance	MPA – Jervis Bay Marine Park (1), community members (45)

Comments

- Concerns are:
 - the establishment of a large-scale marina development at Shark Net Beach, but it is recognised that boating facilities are needed in Jervis Bay
 - the possible expansion of aquaculture activities.

4.4 Hyams Beach Progress Association

Date	29 March 2008
Location	Hyams Beach Rural Fire Service shed
Attendance	MPA – Jervis Bay Marine Park (1), community members (25)

Comments

- Concerns are:
 - the establishment of a large-scale marina development in Jervis Bay, but it is recognised that boating facilities are needed
 - the possible expansion of aquaculture activities
 - jet ski use in the marine park.
- Fishing access in the Hyams Beach habitat protection zone should continue.

4.5 St Georges Basin Community Forum

Date	21 April 2008
Location	St Georges Basin Community Centre
Attendance	MPA – Jervis Bay Marine Park (2), community members (30)

Comments

- The need for a marina or boating facilities within Jervis Bay is recognised. Will the zoning plan allow for this?
- Use of jet skis within the marine park is a concern.
- There is a need for cooperative management arrangements between JBMP and Booderee National Park to minimise the inconsistencies in the regulations imposed by both agencies.

4.6 Sussex Inlet Community Forum

Date	16 June 2008
Location	Sussex Inlet Community Centre
Attendance	MPA – Jervis Bay Marine Park (2), community members (15)

Comments

- Fishers from Sussex Inlet are having to travel further to catch fish during a westerly because of the location of the St Georges–Steamers Head sanctuary zone.
- Members of the local coastal patrol have received complaints of trawlers working in the Wreck Bay habitat protection zone.
- The group discussed how signage and marking of sanctuary zones can be improved to make it easy for locals and visitors alike. The boundaries of the St Georges–Steamers Head sanctuary zone are hard to define, especially off Brooks Rocks.
- Information was requested on the status of GNS within the marine park – are they coming back and how are their numbers?
- There is a need to get coordination between Sussex Inlet and Greenwell Point coastal patrols and recreational fishers. Coastal patrol members might be able to tell fishers whether they are in close proximity to sanctuary zones, hopefully preventing people from getting booked.
- Are there any plans to extend the marine park into St Georges Basin?
- Does the MPA anticipate any changes to the zoning plan as a result of the feedback from the public consultation phase?
- When are the community likely to hear about the results of the review?
- There is concern about the level of commercial fishing in Swan Lake (located outside JBMP).

4.7 Vincentia Residents and Ratepayers Association

Date	17 April 2008
Location	Vincentia Community Centre
Attendance	MPA – Jervis Bay Marine Park (2), community members (40)

Comments

- It was requested that the Hyams Beach habitat protection zone provisions are extended along the foreshore from Hyams Beach towards Vincentia to allow people to fish.
- Concerns are:
 - use of jet skis within the marine park.
 - the possible expansion of the current mussel farming operation within the marine park.
- The sustainability of the current level of commercial fishing within the marine park was also questioned.
- There is a need for a marina or boating facilities within the marine park for large vessels. Suggested locations for such a facility included HMAS Creswell, Callala Bay or Crookhaven Bight.

5. Conservation

5.1 Conservation focus group – Huskisson

Date	30 April 2008
Location	Huskisson Community Centre
Attendance	MPA – Jervis Bay Marine Park (2), community members (6)

Species/habitat protection

- The group suggested that Wowly Creek–Dart Point and Dart Point–Point Perpendicular be made into large sanctuary zones. This would protect additional rocky reef habitat and GNS sites and would include Honeymoon Bay which is an important family recreation area. Straight line boundaries are easier for people to interpret.
- Current sanctuary zones do not offer enough protection for whales – mothers and calves appear to rest in the area off Groper Coast.
- All mangrove areas upstream from Black Caves Creek should be sanctuary zones.
- The Currarong area has very high biodiversity.
- Are there areas of saltmarsh not currently being protected in the marine park?
- It would also be a good idea to make the reef around Abrahams Bosom a sanctuary zone. The area is important for many tropical species and is an important breeding area for lobsters. Numbers of some species have declined in that area e.g. Moreton bay bugs.
- Sharks need total protection.
- The group disapproves of the local council using Myola Spit for fireworks displays given that the area is an important roosting site and recognised as being ecologically important.

Fishing (commercial/recreational)

- The group is opposed to:
 - beach hauling and lift/bait netting
 - competition fishing, including spearfishing competitions, within the marine park
 - artificial reefs – these are not appropriate within the parameters of the existing natural habitat.
- More information on the ecological impact of recreational fishing is needed.

Sanctuary zones

- The percentage of sanctuary zone area should not be reduced.
- If a new sanctuary zone is proposed, will it be researched before being considered or declared?
- Point-to-point sanctuary zones are easier for people to orientate themselves within compared to the Drum and Drum Sticks and Hammer Head sanctuary zones.
- Drum and Drum Sticks and Bowen Island sanctuary zones are too small. Gum Getters Inlet and Lamond Head could be incorporated into a sanctuary zone in the vicinity of Drum and Drum Sticks.
- Sanctuary zones could be rotated to protect seasonal aggregations of fish.

- Offshore sanctuary zones should be located where they were originally proposed in the initial draft zoning plan.
- Habitat protection zones could be placed in offshore sanctuary zones to allow access for rock fishers.

Aquaculture

- The group is opposed to:
 - a public facility i.e. JBMP being reserved for individual use such as aquaculture as it leads to privatisation and personal gain
 - aquaculture in populated areas where multiple uses exist.
- What research has been done on the impacts of aquaculture?
- The size of the area allowed for aquaculture should be reduced.

Catchment management

- Currumbene Creek should not be dredged.
- More investigation and research is needed into the water quality of catchments and sedimentation in Jervis Bay.
- Water quality standards should be set for the catchment areas of the marine park.
- How will Stocklands impact on the marine park?

General

- Has there been any research on the impact of jet skis on the local dolphin population?
- Booderee National Park and JBMP have different interpretations of zones and this creates public confusion. A joint approach is needed between the agencies managing Jervis Bay.
- Focused research is needed for areas of Abrahams Bosom.
- A research area of particular importance is the long-term impacts relating to climate change. The sanctuary zone at Abrahams Bosom may provide an indicator of long-term oceanic and biodiversity change.
- The group opposes the marina proposal. It is very important that an extensive environmental impact study is carried out before any approval or development of a marina.
- The positives of research need to be highlighted to help 'sell' the concept of marine parks.

5.2 Peak conservation groups – Sydney

Date	26 May 2008
Location	The Maiden Theatre, Botanic Gardens Sydney
Attendance	MPA – Jervis Bay Marine Park (3), MPA – Solitary Islands Marine Park (3), DECC – Aquatic Protected Areas Group (1), DECC – Parks and Wildlife Group (2), Department of Primary Industries (1), Australian Government Department of the Environment, Water, Heritage and the Arts (1), peak conservation group members (10)

General

- There is a need for consistency between state and Commonwealth regulations.
- Information/data is needed on how much is being taken out of the marine park by recreational and commercial fishers.
- JBMP is currently the only marine park in NSW that does not extend to the three-nautical mile limit. The National Parks Association would like to have this issue resolved.
- The group acknowledges there is a need for boating facilities in the marine park but is very opposed to a large-scale marina – the impacts of a marina on the sensitive habitats of Currumbene Creek would be great.
- Personal watercraft are not commensurate with the objectives of the marine park – drivers have been seen chasing dolphins on occasion.
- Conservation groups do not support the regulation on the presence of hovercraft and cruise ships in the bay.
- There are safety issues with spearfishing – with potential conflicts between different user groups:
 - there are two types of spearfishers – professionals that target specific species and kids/young adults who swim within 50 metres of the shore and are indiscriminate
 - an exclusion zone of 50 metres from the shore should be introduced for spearfishing.
- Conservation groups support the right of traditional cultural resource use within the marine park.
- The relationship between JBMP and adjacent land managers and land uses needs to be looked at in a strategic way to minimise potential impacts on the marine park.

Species/habitat protection

- Key iconic species such as the GNS need to be protected in sanctuary zones – the radius of GNS zones needs to increase:
 - scientists recommend a zone of 1500-metre radius is needed to protect GNS aggregation sites
 - protection of all sharks and rays from recreational and commercial fishing needs to be addressed
 - no aggregation sites for the GNS have been formally identified in JBMP at the moment, despite sharks being observed in the marine park
 - implementation of temporary sanctuary zones or closures to protect migratory species such as the GNS should be considered, as has been done in other marine parks.

- The group would like to see a four-knot speed limit in areas of seagrass to limit damage from boats (mechanical damage and wake damage) – this may or may not be in sanctuary zones:
 - there is concern about the current impact that anchoring of sailboats is having on seagrass beds
 - the group is concerned that if large boats are encouraged into Jervis Bay, this damage will increase exponentially, e.g at Callala Bay anchorage
 - the group would like to know what the marine park is currently doing to address this issue.

Sanctuary zones

- The sanctuary zone area needs to increase to between 33–50% of the total park area using CAR (comprehensive, adequate, representative) principles.
- The representatives assumed there would be an increase in the amount of sanctuary zone area declared in each marine park as part of the zoning plan review process – this issue needs to be clarified.
- Only 6% of NSW waters are included in ‘no take’ areas such as sanctuary zones – a minimum of 33% needs to be looked at to get comprehensive habitat representation.
- The group believes it is the responsibility of government to take the lead on increasing sanctuary zone areas and protecting marine biodiversity rather than relying on lobbying from conservation groups.
- Introducing sanctuary zones in estuaries should be looked at, to limit negative impacts from catchment activities in the marine park.
- It is vital to link sanctuary zones because:
 - small, isolated sanctuary zones are ineffective
 - corridors from terrestrial areas to marine habitats are needed.
- The group would like to see much larger sanctuary zones than currently exist.

Commercial fishing

- The group would like to see:
 - increasing effort, over the years, given to reinforcing the ban on shark fishing in marine parks
 - an end to trawling in the marine park; the Fisheries Management Strategy for the fishery states that areas in NSW would be set aside to remove trawling.

6. Indigenous groups

6.1 Jerrinja Aboriginal Community

Date	Meeting 1 – 11 March 08, Meeting 2 – 18 April 08, Meeting 3 – 30 May 08
Location	The old school house, Roseby Park (Orient Point)
Attendance	Meeting 1 MPA – Jervis Bay Marine Park (3), community members (10) Meeting 2 MPA – Jervis Bay Marine Park (3), community members (13) Meeting 3 MPA – Jervis Bay Marine Park (2), community members (6)

Comments

- The group would support the establishment of an Aboriginal Advisory Group for the marine park and the development of a Memorandum of Understanding (MoU) that includes such issues as resource use agreements and opportunities for employment. The JBMP Aboriginal Advisory Group should work very closely with the Aboriginal Advisory Group established for the Batemans Marine Park because Aboriginal communities of both marine parks are part of the Yuin Nation which extends from the Shoalhaven to the Victorian border.
- Mechanisms for building relationships between the MPA and the local Aboriginal community should be maintained, ensuring consultation continues.
- The process to address resource use by indigenous communities in the marine park should be maintained.
- The cultural mapping project should progress, to understand and make provision for indigenous cultural use in the marine park.
- Commercial opportunities for Aboriginal communities in the marine park should be maintained.
- There is concern about the possible further loss of areas for indigenous fishing under commercial licences.
- Will there be any changes to the zones and restrictions in the marine park as a result of the zoning plan review process?
- There is concern about the possible increase in the number of beach haulers who are permitted to work in the marine park.
- The group wants recognition of traditional use and access rights to areas where they currently are not able to fish i.e. sanctuary zones.
- The community considers that sanctuary zones are 'white man' controlling access to people who have used these areas for thousands of years.
- An MoU is needed to guarantee traditional access use and to consider the issue of permits.
- In terms of the definition of stakeholders, the Jerrinja community are the traditional owners of the land.

- Hare Bay sanctuary zone is only in place because people wanted to protect the seagrass community. The Jerrinja Aboriginal community now cannot use it for traditional purposes.
- Temporal fishing restrictions should be put in place so fishing cannot be undertaken all the time.
- Group feeling is that the local Aboriginal community should not need to get a licence or permit to catch fish.
- Some think that marine parks and national parks are handing out too many tourism and commercial fishing licences, which is not sustainable.
- The key thing to address is ecologically sustainable use.
- Compliance was raised as an issue that needs to be addressed – there is a problem area in Cabbage Tree Creek which needs policing. The group believes that more enforcement is needed.
- The group questioned how the MPA will cope with or deal with the backlash that is going to come from the wider community about the issuing of permits to local Aboriginal communities.
- The term 'traditional' in terms of use and access for local Aboriginal communities needs to be clarified– fishing practices have moved on from those that were used years ago.
- Commercial fishers within the Jerrinja community say that they only fish 3 out of every 12 months – they consider that this is sustainable. This is not the same as other fishers who are fishing unsustainably.
- There is concern about the level of commercial fishing, in particular beach hauling. Fishing should only target seasonal migratory species.
- There is a need to establish recognition of traditional fisheries methods both for traditional and commercial use.
- The community is concerned that over the years a number of government departments have come and spoken to the community but nothing has been implemented – they want to see action e.g. jobs, training etc.
- Jerrinja should be recognised as a key stakeholder and have sole decision making within the boundary of the Land Council area.
- The importance of not denying access for other Aboriginal groups into the Land Council area is recognised.
- Gum Getters Inlet and Drum and Drum Sticks are significant areas having very important cultural values. The community would like to see a sanctuary zone or similar arrangement extended over this area.
- The MPA needs to recognise and allow traditional access and use of marine resources including sanctuary zones. Hare Bay, Groper Coast and The Docks are areas of particular importance. The community would like to make arrangements for traditional access and resource use, for example during cultural camps, to allow elders to teach children traditional ways.
- MPA and the Department of Environment and Climate Change NSW (DECC) need to establish jobs or identified positions for Aboriginal/Jerrinja people in the marine park.
- MPA and DECC need to maintain a consultation processes to ensure a positive relationship is developed.

6.2 Nowra Local Aboriginal Land Council

Date	3 May 2008
Location	Meeting room, Nowra Showground, Nowra
Attendance	MPA – Jervis Bay Marine Park (2), Nowra Local Aboriginal Land Council members (40)

Comments

- The group supports the establishment of an Aboriginal Advisory Group for the marine park, and the development of an MoU that includes issues such as resource use agreements and opportunities for employment. The Aboriginal Advisory Group should work very closely with the Aboriginal Advisory Group established for the Batemans Marine Park because Aboriginal communities of both marine parks are part of the Yuin Nation which extends from the Shoalhaven to the Victorian border.
- Mechanisms for building relationships between the MPA and the local Aboriginal community should be maintained, ensuring consultation continues.
- The process to address resource use by indigenous communities in the marine park should be maintained.
- The cultural mapping project should progress, to understand and make provision for indigenous cultural use in the marine park.
- JBMP needs an Aboriginal Liaison Officer.

6.3 Wreck Bay Aboriginal Community

Date	Meeting 1 – 18 February 08, Meeting 2 – 27 May 08
Location	Wreck Bay Community Hall, Wreck Bay, Jervis Bay Territory
Attendance	Meeting 1 MPA – Jervis Bay Marine Park (3), community members (13) Meeting 2 MPA- Jervis Bay Marine Park (2), community members (7)

Comments

- The group supports the establishment of an Aboriginal Advisory Group for the marine park, and the development of an MoU that includes issues such as resource use agreements and opportunities for employment. The Aboriginal Advisory Group should work very closely with the Aboriginal Advisory Group established for the Batemans Marine Park because Aboriginal communities of both marine parks are part of the Yuin Nation which extends from the Shoalhaven to the Victorian border.
- Mechanisms for building relationships between the MPA and the local Aboriginal community should be maintained, ensuring consultation continues.
- The process to address resource use by indigenous communities in the marine park should be maintained.
- The cultural mapping project should progress, to understand and make provision for indigenous cultural use in the marine park.

- Community members are concerned about the amount of trawling that is occurring in the Wreck Bay HPZ area.
- The community raised questions about cultural sites located within the marine park, and the protection that the MPA could provide for these sites.
- Aboriginal traditional owners are in the three areas (Wreck Bay, Jerrinja and Nowra communities) and they all need to work as one group of traditional owners for the future of the next generation to have their rights respected.
- Are abalone divers still operating in the marine park?
- The group are interested to know what the response to the review has been from the local beach haulers.
- The group is concerned about trawling in the Wreck Bay area, and the fact that you can see the trawlers dredging the bottom of the marine park and bringing up lobsters. The group believes trawling should not be allowed in the marine park.
- The community would like to see an indigenous cadet marine park ranger program introduced for JBMP.
- JBMP needs an Aboriginal Liaison Officer.
- The Wreck Bay Community Council body holds title to the land and questions whether they also have rights to the water. If they do, how do they access this policy?

7. Marine science

7.1 Marine science focus group

Date	26 May 2008
Location	The Maiden Theatre, Botanic Gardens Sydney
Attendance	Marine scientists (8), MPA – Jervis Bay Marine Park (3), MPA – Solitary Islands Marine Park (3), Department of Primary Industries (1), Australian Government Department of the Environment, Water, Heritage and the Arts (1),

Comments

- Could the area of sanctuary zone be reduced as part of the zoning plan review process?
- If GNS aggregation areas are not protected in a sanctuary zone, this needs to be rectified, or adequate buffer zones (1–1.5 kilometres) around aggregation sites need to be implemented. If a 1.5–2-kilometre buffer zone/sanctuary zone is established around known aggregation sites, how will this impact on the total percentage of marine park area in sanctuary zones?
- More work needs to be done to fill out the GNS data set.
- How are long-term human population changes and climate change impacts being incorporated into the planning process? Marine park management will need to take into account erosion and deposition of sediment and increases in storms.
- Mangroves appear to be doing quite well and should cope well with sea-level rise.
- Saltmarsh habitat is the most susceptible to change, and to a lesser extent seagrass habitat.
- With hard engineering options, there could potentially be loss of intertidal habitats due to sea-level rise as people build sea walls etc. to arrest erosion.
- How will the marine park deal with incremental increases in nutrient pollution and its potential impacts over time?
- It is important to link terrestrial national parks with marine sanctuary zones – this will protect catchments feeding into marine parks and limit some of the impacts.
- What sort of event size detected during monitoring will trigger a change in management – how are results being interpreted?
- What sort of surveys or monitoring are being carried out to look at ecologically sustainable use?
- There is some anecdotal evidence that warmer water fish have been observed in areas where they have not been recorded before, for example pearl perch, which are appearing in sufficient numbers now that commercial fishers are recording them in their catch returns. This species was not being caught in the area 10 years ago.
- There is no substitute for undertaking fish counts in marine parks, especially if trying to ascertain whether we are protecting biodiversity etc.

- Scientists from the University of Technology, Sydney, had undertaken meshing survey work in several seagrass areas of Jervis Bay – Hare Bay, Currambene Creek, Moona Moona Creek:
 - different size mesh nets were used
 - there is pre-zoning data and one data set post 2002.
- It was thought that DPI prepared a report in 1985 in response to a proposal to build a marina in the Shark Net Beach area (Huskisson sanctuary zone).
- If a marina is built in the marine park, a potential increase in marine pest introductions will need to be considered.
- Worm tubes present on the floor of Jervis Bay provide important habitat structure in the unconsolidated sediments of the bay.

8. Recreational fishers

8.1 Recreational fishers focus group – Callala Bay

Date	15 April 2008
Location	Callala Bay Progress Hall
Attendance	MPA – Jervis Bay Marine Park (2), recreational fishers (12)

General

- The NSW Fishing Clubs Association (NSWFCA) tabled a submission to the MPA detailing their position in regard to establishing and managing marine parks in NSW, and their concerns with the zoning plan for JBMP.
- The NSWFCA believes, and the attendees of the focus group meeting agree, that all current sanctuary zones should be re-zoned as habitat protection zones. This will allow fishers to access all the waters of the marine park.
- If sanctuary zones are to stay, the group suggested that a habitat protection zone similar to that at Hyams Beach be introduced into each sanctuary zone, which would improve access for shore-based fishing.
- A number of sanctuary zones (Gropers Coast, The Docks, Point Perpendicular–Crocodile Head, Bowen Island and St Georges–Steamer Head) were all recognised as good and safe fishing spots that can now only be accessed by scuba divers.
- It was felt that the MPA did little, if anything, to address the key threats to the marine environment such as pollution and marine pests.
- There is concern about
 - the science, or perceived lack thereof, used by the MPA in creating marine parks and establishing sanctuary zones within those marine parks
 - the level of commercial fishing within the marine park and whether this has decreased over time
 - confusion regarding the different fishing-related rules that exist between Booderee National Park and JBMP
 - the impact that increased seal numbers are having on fish stocks within the marine park
 - the marking of sanctuary zones within the marine park and the need for improvements in this area.
- It is felt there has been a transfer of effort from areas that have been closed to recreational fishers by the zoning plan to areas that remain open, e.g. bait collecting activities and closures of fishing locations to rock fishers.
- Restrictions should be placed on commercial fishers to prevent fishing during school holidays and long weekends as it is having an impact on tourism.

Hammer Head Sanctuary Zone

- Beach hauling is currently permitted on both sides of the sanctuary zone – why not make the whole beach a habitat protection zone?
- It was requested that restrictions be put on commercial fishers (beach haulers and trawlers) so only local commercial fishers have access to the area.
- Marking of the zone needs improvement.

Drum and Drum Sticks Sanctuary Zone

- This site is popular with divers, but the group believes it is not achieving anything in terms of protecting fish stocks due to its size.
- The sanctuary zone should be abolished.

Point Perpendicular–Crocodile Head Sanctuary Zone

- Point Perpendicular is hard to access for fishing.
- The closures introduced on the Beecroft Peninsula have had a compounding effect on access for rock fishers. It is considered that approximately 80–90% of sites have been lost to rock fishers as a result of the Beecroft Defence and Booderee National Park closures and the sanctuary zone restrictions.
- A 100-metre habitat protection zone should be introduced around ‘The Ladders’ and the southern side of Crocodile Head to allow access for rock fishers within this sanctuary zone.
- The sanctuary zone boundaries should be shifted to those parts of the coast that cannot physically be accessed by rock fishers. It was stated that as the fishers cannot reach these sites anyway, and the habitat is very similar, this would meet the needs of all parties (fishers and MPA).

The Docks Sanctuary Zone

- This area provides safe boating access and ‘mill pond’ like conditions which can no longer be accessed by fishers – the area is now only accessible to scuba divers.

Groper Coast Sanctuary Zone

- This is the safest location for rock fishing inside Jervis Bay that is also accessible.
- Group would like this sanctuary zone opened up to fishing because it provides safe access for older, less mobile fishers as well as children.
- Access is facilitated by a short walk from the nearby carpark to Blue Hole. The site can also be accessed by campers staying at Honeymoon Bay, which is important from a tourism perspective.

Hare Bay Sanctuary Zone

- A habitat protection zone similar to that at Hyams Beach should be introduced to the stretch of coastline between Red Point and Carama Inlet.

Hyams Beach Habitat Protection Zone

- NSWFCFA feels that spearfishers have been discriminated against through the creation of this zone because they are not able to fish here as they can in other habitat protection zones.

- The group believes that including a habitat protection zone at Hyams Beach is not fair to the residents in other parts of Jervis Bay, where there are sanctuary zones extending to the mean high water mark with no habitat protection zones along the foreshore to allow fishing.

Estuarine/creek sanctuary zones

- Currently the only creek within the marine park that is open to fishing is Currambene Creek. The other creeks within the park (Wowly Gully, Carama Creek, Blacks Cave Creek and Moona Moona Creek) have all been zoned as sanctuary zones.

8.2 Recreational fishers focus group – Huskisson

Date	16 April 2008
Location	Huskisson Community Centre
Attendance	MPA – Jervis Bay Marine Park (2), recreational fishers (8)

General

- The group acknowledged that more places with safe access for rock fishers are needed within the marine park, because this is limited at the moment.
- The group does not want to see any more sanctuary zones within Jervis Bay as there are limited areas for fishers to visit in small boats.
- The areas around Dart Point, Longnose Point and Point Perpendicular provide good fishing for those in small boats.
- Could a rotational method of opening and closing certain areas to fishing, like the method used by farmers, be implemented within the marine park?
- The MPA should consider having a sunset clause on all forms of commercial fishing that operate within the marine park i.e. trap and line fishers, etc.

St Georges–Steamers Head Sanctuary Zone

- This area offers good fishing and protection if a westerly wind is blowing, but because the area is a sanctuary zone fishers cannot fish here anymore. There is now no protection offered to small boats using the southern end of the marine park in a westerly.
- Small boats without GPS find it difficult to know if they are within the sanctuary zone or not, especially when they get close to the external boundary of the marine park.
- Trawlers have been observed working in the sanctuary zone.
- A member of the Currarong Fishing Club suggested moving the sanctuary zone so it encompasses the area from Cape St George lighthouse to Moe’s Rock. The rationale behind this suggestion is that land access to this area has been cut off by Booderee National Park, and this is an area that very few fishers visit.

Wreck Bay Habitat Protection Zone

- It was questioned whether trawlers are permitted in this area, because boats have been seen relatively close to the rocks at Kitty’s Point.
- Lots of cars have been observed on Bherwerre Beach which did not appear to belong to licensed commercial fishers or other persons or bodies authorised under the Marine Parks Act.

Groper Coast Sanctuary Zone

- Members of the Currarong Fishing Club would like to see this sanctuary zone opened back up to fishing.

Point Perpendicular–Crocodile Head Sanctuary Zone

- The southern boundary of this zone could be extended around Point Perpendicular into the bay itself – the trade-off being to remove The Docks Sanctuary Zone and the Groper Coast Sanctuary Zone and make the area a habitat protection zone.

8.3 Recreational fishers focus group – Nowra

Date	24 April 2008
Location	Nowra School of the Arts
Attendance	MPA – Jervis Bay Marine Park (2), recreational fishers (20)

General

- Is there a preconceived plan by JBMP?
- Recreational fishers' concerns were not addressed in the original zoning plan.
- Do not expand existing zones.
- Charter fishers cannot fish in Booderee National Park waters.
- Some believe that submissions and opinions are ignored in the planning process – at both Jervis Bay and Batemans marine park.s
- Some of the best rock fishing platforms exclude recreational fishing.
- Land access closures prohibit access to some habitat protection zones (i.e. ones that can be fished).
- All areas safe for rock fishing in a nor-easter are closed off to fishing.
- There has been no improvement in fish stocks (in part because commercial fishing is still permitted).
- One member asked the group: 'Are there areas we don't want to fish which we don't mind being made into sanctuary zones? Once made a sanctuary zone they are rarely, if ever, returned.'
- JBMP should exert more influence over Booderee National Park decisions. There needs to be better coordination between MPA, Defence and Booderee National Park with regard to access.
- How can we keep trawlers outside the two-mile limit?
- Catch-and-release-only fishing should be considered – barbless hooks should be allowed in some areas, e.g. Carama Inlet.
- It is difficult to see signage in the marine park.
- Where can people access results of research on marine parks, in particular sanctuary zones? This information would be important in justifying changes to sanctuary zones.
- Land-based fishers are discriminated against over boat-based fishers. This needs to be addressed by cooperation between various organisations.
- Has the issue of artificial reefs been raised? Would it be considered?

- Increasing the 'no anchoring' zone at The Tubes would stop people charging through – make it an exclusion zone.
- It would be good to access Currambene Creek (wharf) for spearfishing.

Sanctuary zones

- Why can sanctuary zones not be trolled through e.g. the first 100 metres from a cliff face?
- Point Perpendicular–Crocodile Head Sanctuary Zone does not protect fish adequately and does not allow for safe fishing in nor-easter conditions. Foreshore access for family fishing is needed in the Huskisson Sanctuary Zone.
- Lobster Bay should be made a sanctuary zone.
- There is no scientific evidence behind the 20% sanctuary zone area in JBMP. Existing zones are not effective.
- Point Perpendicular–Crocodile Head Sanctuary Zone should not be moved. The eastern boundary of the St Georges–Steamer Head Sanctuary Zone should be moved west to Brooks Rocks so people can fish there in a nor-easter.
- Why does Hammer Head sanctuary zone extend so far north?
- Would Cave Beach be as suitable as Hammer Head Sanctuary Zone for a new sanctuary zone?
- Make Hammer Head Sanctuary Zone a habitat protection zone.
- One member asked the group: 'Do people object to sanctuary zones 200 metres wide between Snake Gully and Gum Getters Inlet (which is north-west of Drum and Drum Sticks)? A sanctuary zone here could replace ones at The Docks or Groper Coast.'

Species/habitat protection

- Where have GNS been seen, and will this affect expansion of protected areas?
- Diver behaviour negatively impacts on the GNS (especially night diving) – not recreational fishers. Recreational fishers do not target the GNS.
- Would MPA consider banning diving at GNS aggregation sites?
- DPI has evidence that GNSs are not disturbed by divers.
- GNS numbers have declined because of the use of powerheads and spearfishing, not because of recreational fishing.
- Hare Bay is one of the best areas zoned as a sanctuary zone by the JBMP for conservation values.
- Black cod (an endangered species) have been caught in flathead grounds out the front of the Heads in trawled areas – the species needs greater protection.

8.4 Spearfishers and free divers focus group

Date	13 May 2008
Location	Huskisson Community Centre
Attendance	MPA – Jervis Bay Marine Park (3), spearfishers (7)

General

- There are two types of spearfishers – the kids wanting to try it out and the ‘real’ spearfishers who would not go into areas where there are conflicts with others users in terms of safety.
- Areas along the open coast are only really used by competition divers and experienced divers.
- Spearfishers can live with the zoning plan as it currently stands – they do not want to lose any more area.
- Spearfishing restrictions in the Hyams Beach habitat protection zone are not a significant concern for spearfishers.
- Restrictions on fishing in creeks and rivers etc. is also of little or no concern because most spearfishers would not go to these areas anyway.
- The group asked for an overview of the research that has been undertaken in the marine park over the past six years, especially in sanctuary zones.
- The Australian Underwater Federation (AUF) spearfishing accreditation process is now coming to fruition.
- There is concern about aquaculture in the marine park and the possibility of species escaping and out-competing local species, or taking over adjacent habitats, e.g. mussels on the foreshore at Eden.
- The seal population within the marine park has increased significantly, with a subsequent decline in fish stocks.

Access

- Beecroft Defence area has closed the vehicle access track to Target Beach – there is now a 20-minute walk to the site, limiting fishers’ access.
- The group supports closing Honeymoon Bay embayment to fishing (line and spearfishing) because of conflicting use with swimmers and the safety issue this brings up.
- Historically, spearfishers could fish anywhere, thus distributing their effort over a larger area; they are now confined to smaller areas where the pressure is increased significantly.
- It is not possible to fish reefs off Stony Creek/Moes Rock due to strong currents in the area.
- Longnose Point is a traditional fishing spot for boat-based fishers. In summer, there is a lot of pressure from recreational line fishers – conflict has occurred between the two user groups.
- Spearfishing at Longnose Point can be dangerous, with boats constantly moving and having no regard for dive flags etc.
- There are no protected or fishable sites in a nor-easter or southerly.
- There is lots of fishing pressure (line and spear) in the area around The Docks in a nor-easter, resulting in lots of conflict.

- Safe areas should be considered, where people can go to learn about the craft of spearfishing.
- Shore-based spearfishing restrictions exist on the Beecroft and Booderee peninsulas, which further limit spearfishing opportunities in Jervis Bay.
- 99% of spearfishers are not physically able to dive on reefs greater than 20 metres in depth.
- The only safe areas to fish in a nor-easter are Point Perpendicular and Longnose Point – areas of shallow water that are accessible.
- In a southerly people can only fish at Currarong.
- Plantation Point is the only area in the bay where beginners can currently go.
- Callala Point is not a viable option for spearfishing as the visibility is generally poor.
- People cannot use Murrays Beach boat ramp to launch boats because spearguns are prohibited in Booderee National Park.

Species /habitat protection/grey nurse shark

- Spearfishing is target-specific and fishers have very little interaction with the GNS.
- GNSs don't sit on the Drum itself (Drum and Drum Sticks Sanctuary Zone) but sit in an area behind the Drum in gutters on the bottom.
- Why are charter divers not charged to dive at sanctuary zones where GNSs are located? Fishers have to pay to have a licence – the group believes this is an equity issue.
- Spearfishers have contributed a lot of time in terms of helping with shark counts etc. that is not always recognised. There is great potential to work together.

Sanctuary zones

- Spearfishers would like to get some sanctuary zone area returned to fishing, to allow access in adverse weather conditions.
- Spearfishers would like to get The Docks Sanctuary Zone back for fishing if possible.
- The group questions the value of the Drum and Drum Sticks Sanctuary Zone, due to its size.
- Get rid of the small sanctuary zones and consolidate them into large areas using prominent landmarks and features as boundaries.
- There is a need to look at the possible impacts that diver numbers are having on GNSs at the Drum and Drum Sticks Sanctuary Zone.
- A pole or marking is needed on Bowen Island to mark the sanctuary zone boundaries so they can be seen from a boat – the zone needs to be marked better.
- Marking of zones really needs addressing – it could be done better. Of particular concern are the Bowen Island Sanctuary Zone and the southern boundary of the Point Perpendicular–Crocodile Head Sanctuary Zone.

9. Sailing

9.1 Sailing focus group

Date	14 April 2008
Location	The Postmans Tavern meeting room, Nowra
Attendance	MPA – Jervis Bay Marine Park (2), Jervis Bay Cruising Yacht Club members (8)

Comments

- There is a lack of facilities i.e. for boarding, vessel pump-out and maintenance, for deep-drafted vessels in the marine park. Vessels cannot use the facilities at Huskisson Wharf except for a limited period around the high tide.
- A proposal has been submitted for a safe boating facility to be constructed off Shark Net Beach at Huskisson, and amendments should be made to the zoning plan to permit this activity.
- Why was a special purpose zone not put in place at Callala Bay in the original zoning plan, to reflect the high level of boating activity that occurs there?
- An increase in the number of visitor moorings within the marine park is seen as a priority.
- The Jervis Bay Cruising Yacht Club would like a safe boating harbour with facilities for refuelling, passenger pick-up and safe anchorage – and not a large scale marina *per se*.
- The group suggested that by extending the Callala Bay jetty by another 50 metres in length, deep-drafted vessels would be able to visit Jervis Bay.

10. Scuba diving

10.1 Scuba diving focus group

Date	21 May 2008
Location	Huskisson Community Centre
Attendance	MPA – Jervis Bay Marine Park (3), local scuba divers (14)

General

- The group inquired whether swath mapping is being undertaken in all marine parks in NSW, and whether all of JBMP will be covered in time, and whether the public would be granted access to the detailed 3D images.
- Eastern blue devil fish have been seen throughout Jervis Bay, at Wreck Bay, Currarong and the Drum and Drum Sticks Sanctuary Zone. They have been seen not just in areas with cave habitats but also out in the open.
- The size of sanctuary zones for the GNS are inadequate – they are too small.
- Reef habitat areas do not necessarily reflect high levels of biodiversity.
- Current sanctuary zones are working well but could be improved.
- In terms of fish species conservation, there is a need to introduce additional regulations to grant fisheries more protection.
- There is a need for buffer zones in the waters adjacent to several sanctuary zones which get a lot of pressure placed on them in bad weather.
- The group acknowledges there is a need for equity in use for all stakeholders, while at the same time protecting species diversity.
- More public moorings are required for larger vessels (e.g. 30-foot vessels) in the marine park.
- More money is required for compliance and enforcement.
- Extend the marine park boundary to include ‘The Banks’.
- The group would like to see a ban on fishing competitions – both line and spear.
- There are concerns about:
 - the use of jet skis in the marine park
 - the noise generated from the commentary provided by dolphin-watching boats, especially in nor-easter weather conditions – boats should sit one kilometre offshore.
- Protection is required for the *Corangamite* shipwreck in Wreck Bay.
- Wider buffer zones are required for sanctuary zones to protect fish from being caught.
- Buffers are required between zone types where there are sanctuary zones adjacent to more intensive commercial activities e.g. trawling in Crookhaven Bight General Use Zone next to Hammer Head Sanctuary Zone, and purse seine fishing next to Booderee National Park waters.
- More protection is required for threatened shorebirds at Bherwerre Beach – there is a conflict with vehicles being able to access the beach.

- More consideration is required in regard to activities in intertidal areas that impact on species, e.g. dogs on Myola Spit interacting with threatened shorebirds.
- More consideration needs to be given to the ecological value of temperate reefs in the marine park – there is need to recognise the national and international value of these systems.
- Marine park zoning should reflect the increased pressure that will occur in the next 10 years with increases in population numbers and usage.
- Zoning needs to take into account potential impacts from climate change – protection is needed for species and habitats.
- Usage is incompatible between divers and spearfishers in Honeymoon Bay, as well as spearfishers and line fishers.
- All species of boar fish (long, short, giant) require protection in the marine park because they have similar behaviour to gropers, and move about in pairs.
- The taking of all shark species in the marine park needs to be banned.
- Remove sharks from the list of species that can be taken in a habitat protection zone.
- Divers would be happy if a regulatory code of conduct was introduced to protect GNS. The Dive Club has its own code of conduct. Commercial operators are starting to implement their own rules.
- Jervis Bay Dive Club would accept exclusion from sites if it meant serious protection for the GNS.

Spearfishing

- There is high potential for conflict in areas frequented by divers and spearfishers.
- Spearfishing is seen as a highly intensive fishing activity and there are several concerns about it:
 - in some localities, fish have become very tame around people, making them an easy target for spearfishers
 - spearfishing occurs in shallow areas where wobbegongs occur
 - fishers can harvest a large number of fish from a reef in one day
 - spearfishers are taking the largest fish out of the system when they fish a reef.
 - Rules are needed in regard to the size of fish taken and species permitted to be caught.
- Spearfishing competitions are an incompatible use of the marine park. The number of species that can be caught during competitions should be more sustainable.

Currarong Bommie/Hammer Head Sanctuary Zone

- More protection is required at Currarong.
- GNSs are often seen in the vicinity of Lobster Bay.
- There is no buffer around Hammer Head Sanctuary Zone – trawling occurs right next to the zone as there is no habitat protection zone acting as a buffer between the two.
- More protection is needed at Currarong Bommie. (The group acknowledges that one third of the Bommie exists outside the current marine park boundary.)
- The Hammer Head Sanctuary Zone should be extended out to the marine park boundary to give more protection to intermediate reef habitat.
- This is the only location where divers have seen the eastern foxfish.

- GNS are seen from time to time but divers have not been able to pinpoint exact sites.
- Protection is needed for the *Merimbula* shipwreck off Currarong.

Drum and Drum Sticks Sanctuary Zone

- Current zoning does not protect the GNS aggregation site.
- The group would like to see the sanctuary zone boundaries extended from Gum Getters Inlet in a line directly south to Lamond Head.
- There is currently no protection for the *Wandra* shipwreck in the locality.
- Black cod have been seen at the site.

Point Perpendicular–Crocodile Head Sanctuary Zone

- This zone is okay.
- Fishers congregate under Point Perpendicular in bad weather.
- Divers go in under Point Perpendicular in a nor-easter.
- Bommie, on the southern boundary of the zone, is good for blue devil fish.
- There are three GNS sites under Point Perpendicular.
- GNS are regularly seen in the area from Point Perpendicular to The Tubes.

The Docks Sanctuary Zone

- The zone needs to be increased in size because it is not big enough.
- It is not big enough to protect the GNS – it does not protect all known GNS areas.
- The group would like to see the sanctuary zone boundary extended from Longnose Point to The Tubes.
- Eastern blue devil fish are seen right throughout this area.
- GNSs are seen at Easter Reef and Apollo Reef and in the area just to the north-east of Longnose Point.
- Seasonal anchoring restrictions seem to be working.

Huskisson Sanctuary Zone

- There is concern about beach haulers and the potential interaction between shorebirds and the fishers' vehicles.
- A connection is needed between Currambene Creek Sanctuary Zone and Huskisson Sanctuary Zone to protect fish from being caught as they leave the Creek.
- Extend the northern boundary of the sanctuary zone in a line westward to intersect with Callala Beach/Myola Spit.
- Jervis Bay Dive Club members are split 50:50 for and against a marina in this area.

Currambene Creek Mudflats Sanctuary Zone

- More birds have been seen in this location in the last two years.
- People are still seen using a yabby pump to collect nippers in summer.

Bowen Island Sanctuary Zone

- More protection is required for Bowen Island reefs.
- The current sanctuary zone is not big enough to protect the GNS – it doesn't encompass Harry's Hole where GNSs live.
- Mature male GNSs are seen in this sanctuary zone – this is significant because most GNSs seen in Jervis Bay are females or juveniles.
- The zone does not protect the complex reef structures in the south-east corner of Bowen Island.
- Seals sit in the south-east corner during winter.
- The group suggested that a larger square-shaped sanctuary zone be created around the island.
- A number of female humpback whales and juveniles rest in the area between the southern end of Bowen Island and Booderee National Park.
- Protection is needed for the northern end of Bowen Island – two or three GNSs are seen regularly in this area:
 - they are heavily impacted on by spearfishing
 - this is a popular dive spot and the fish are getting used to humans – this familiarity means that they can be easily targeted by spearfishers
 - look at excluding spearfishing from this northern area of Bowen Island.

Steamers Head Sanctuary Zone

- Extend the sanctuary zone boundary north to Moe's Rock to protect intermediate reef habitat. Look at including a Hyams Beach-type habitat protection zone to allow fishing while at the same time protecting reef habitat.
- Extend the sanctuary zone boundary west around St George Head to protect the *Corangamite* shipwreck site (near Kitty's Point).
- Black cod are seen in the vicinity of Blacks Harbour.
- Eastern blue devil fish and red Indian fish are seen in the area.

Hyams Beach and Groper Coast sanctuary zones

- These zones are okay.
- There are more animals in the area than before, especially since the wobbegong fishers have been removed.

11. Information stalls

Staff from Jervis Bay Marine Park held information days at various locations adjacent to the marine park during the consultation phase of the zoning plan review process. The information display was conducted from 10 a.m. – 3 p.m. on each day. Several media articles were also generated, detailing the dates and locations of the various information displays. Dates and locations of the information stalls, and the number of community members in attendance at each display, are listed below.

Date	Location	No. of attendees
2/4/08	Huskisson	48
3/4/08	Callala Bay	36
5/4/08	Currarong	55
9/4/08	Vincentia	37
10/4/08	Stockland, Nowra	55
11/4/08	Sussex Inlet	9
12/4/08	Huskisson	61
15/4/08	Currarong	0
16/4/08	Callala Beach	5
19/4/08	Vincentia	46
26/4/08	Callala Bay	41

12. Other meetings and briefings

A number of other meetings and briefings were held, just before and during the consultation phase of the zoning plan review process. The primary aim of these meetings was to inform people about the zoning plan review process, including the most appropriate means for presenting their views to the MPA.

Date	Individual or group
19/2/08	DECC Nowra Area field staff
21/2/08	Booderee National Park managers
28/2/08	State government agencies: NSW Maritime, DPI (Fisheries), Department of State and Regional Development, Department of Lands, DECC (Coast & Estuaries Branch)
28/2/08	DECC Southern Region staff
25/3/08	Shelley Hancock MP
25/3/08	Shoalhaven City Council Councillors and senior staff
7/4/08	Joanna Gash MP
29/4/08	Department of Defence
15/4/08	Southern Rivers Catchment Management Authority

Part B: Submissions

1. Introduction

Part B of this report is a summary of the submissions received during the review of the Jervis Bay Marine Park Zoning Plan. It provides an overview of submissions received and does not fully report the detailed information presented in many submissions. For this reason, individual comments may not be reported 'word for word', but are aggregated with similar comments or issues. It is not uncommon for specific interest groups to generate large volumes of submissions on one particular issue. The Marine Parks Authority recognises this may not necessarily reflect the level of interest in the community generally, but may be due to other factors such as:

- there may only be a limited number of people involved in a specific activity
- some groups are more organised than others in encouraging submissions from their members
- the time and resources available to prepare a response vary between different groups
- in some cases there is a lack of understanding or an assumption that specific groups or communities will or will not be affected.

Submissions are summarised according to the information and ideas expressed, irrespective of the type of submission.

This summary does not attempt to analyse, interpret or weight submissions or issues. The Marine Parks Authority has carefully considered all submissions as well as discussions, and advice received at various meetings and venues throughout the consultation program. This summary does not represent or assume the views of the broader community in its entirety.

1.1 Overview of submissions

A total of 680 submissions were received from a wide range of interest groups: 648 from individuals and 32 on behalf of organisations. Of these, 34.6% of the submissions were received from within the local marine park area, 58.9% were received from other areas in NSW and the ACT and 2.6% came from other states or overseas (3.9% did not provide a postcode).

Submission formats varied and included individual and group submissions, letters, emails, form letters, maps, reports and the JBMP submission forms in hardcopy or from the MPA website.

Three different form letters (42.5% of total submissions) were received generated by the Coastal Rights Association (92 submissions), Nature Conservation Council (36 submissions) and the National Parks Association (161 submissions). The MPA did not give any particular weighting to the various formats of the submissions or the numbers received, and has reviewed and considered all of them.

The majority of the submissions originated from the recreational fishing and the environmental/conservation sectors.

The most commonly expressed opinions were:

- keep the current zoning plan as it is with no changes
- sanctuary zones should be made larger to incorporate more habitats, to better represent examples of habitats and to improve protection for threatened species and marine biodiversity
- disagreement with the need for sanctuary zones, and in some instances marine parks generally
- recreational fishers should have more access because their impact on marine biodiversity is unproven
- Grey nurse sharks (GNSs) need increased protection
- the appropriateness of commercial fishing is questionable, especially beach hauling, purse seine netting and trawling in the marine park
- appropriate boating infrastructure is needed within the marine park
- signage delineating zone boundaries needs to be improved
- the appropriateness of using personal watercraft (jet skis) in a marine park is questionable.

2. Submissions – general information

2.1 Process for recording submissions

Submissions were received by fax, email and post, and at focus group meetings and community information sessions. Formats varied and included individual and group submissions, letters, emails, form letters and photocopied submissions (identical submissions except for name and address), maps, reports and the JBMP submission forms distributed in hard copy or via the MPA website.

All submissions were date stamped upon receipt and secured until processing. Details of the individual or group making the submission were recorded and allocated a unique record number to allow for easy identification and subsequent data retrieval.

Each submission was reviewed to identify specific zones, particular locations within existing zones, the main reason or reasons for proposed modification of the current zones and any key themes or issues relating to the current zoning plan. Submissions were also reviewed for map information as many people had drawn on the current zoning plan map to offer zone suggestions or alterations. Several individuals provided more than one submission. In these cases, subsequent submissions were compared to the original one and new information added to the database under the original record number.

A Microsoft Excel spreadsheet was used as the JBMP submission database to store submission details and report on the range of comments made. The content of each submission was read and key words, issues and statements highlighted and entered into the spreadsheet under headings that corresponded to those used on the submission form.

Three different form letters were received during the public consultation period. One of these gave the sender an opportunity to add any personal comments they had with regard to the review. These letters were treated as a separate category of form letter. Copies of the three form letters are provided in Appendices 2a, 2b and 2c.

In total, 92 copies of form letter 1, generated by the Coastal Rights Association (Appendix 2a), 36 copies of form letter 2 from the Nature Conservation Council (Appendix 2b) and 161 copies of form letter 3, generated by the National Parks Association were received (Appendix 2c). Of the 161 copies of form letter 3, 67 provided additional personal comments on the form letter.

The MPA did not give any particular weighting to the various submission types or numbers, and has reviewed and considered the content of all submissions.

2.2 Location of respondents

In total, 680 submissions were received from individuals and organisations or groups and entered in the JBMP submission database. The locations of respondents are summarised in the table below:

Region	No. of responses	% of total
Marine park area*	235	34.6
Sydney Metropolitan	288	42.4
NSW (all other areas)	97	14.3
ACT	15	2.2
Other states and international	18	2.6
No postcode given	27	3.9
TOTAL	680	100

* includes all towns/villages with the postcode designation 2540 and 2541.

2.3 Age of respondents

Respondents who completed the submission form were given the option of identifying their age group. In total, 322 responses were obtained. The age groups of those respondents are summarised below.

Age group	Count	% of total
0–17	8	2.5
18–24	8	2.5
25–34	45	14
35–44	54	16.8
45–54	58	18
55–64	98	30.4
65+	51	15.8
TOTAL	322	100

2.4 Main interests in the marine park

Respondents who completed a submission form were asked to identify their main interests in the marine park in order of importance. Responses provided using form letters did not provide enough information to answer this question. While some respondents numbered their interests, others just marked their interests with a 'x'. For the sake of reporting, each response has been given the same weighting and a count made of each time the particular activity/interest was recorded by the respondents. The total number of interests exceeds the number of submissions received as individuals were able to identify multiple interests.

The interest reported by respondents may reflect a direct involvement in a particular activity, or an opinion on the management of that activity within the marine park.

Respondents who completed this question on the submission form identified their main interests in the marine park as:

	Main interests	No. of submissions
1	Recreational fishing	247
2	Swimming	216
3	Beach activities	202
4	Recreational boating	189
5	Snorkelling	171
6	Conservation	162
7	Wildlife observation	158
8	Scenic amenity	158
9	Kayaking / canoeing	99
10	Scuba diving	82
11	Surfing	77
12	Spearfishing	76
13	Charter fishing	51
14	Personal watercraft / water sports	43
15	Commercial fishing	42
16	Other	14

Note: 'Other' includes visual arts, yacht racing, aquaculture, free diving, shell collecting, access to the coastline, practice of culture and heritage and environmental protection activities.

2.5 Views on conserving Jervis Bay Marine Park

Respondents who completed a submission form were asked to indicate their view of conserving Jervis Bay Marine Park by selecting one of six responses that most closely represented their view. Submissions other than those using the submission form did not give the information required to answer this question. A total of 344 responses were provided to this question. The breakdown of answers is as follows:

View on conserving JBMP	Count	% of total
Strongly in favour	143	41.7
In favour	64	18.3
Neutral	58	16.9
Against	32	9.3
Strongly against	47	13.7
Don't know/not sure	0	0
TOTAL	344	100

2.6 Support for sanctuary zones in Jervis Bay Marine Park

Respondents who completed a submission form were asked to indicate how strongly they supported the sanctuary zones in Jervis Bay Marine Park by selecting one of six responses that most closely represented their view. Submissions other than those using the submission form did not give the information required to answer this question. A total of 344 responses were provided to this question. The breakdown of answers is as follows:-

Support for sanctuary zones	Count	% of total
Strongly in favour	128	37.1
In favour	36	10.5
Neutral	35	10.2
Against	71	20.7
Strongly against	73	21.2
Don't know/not sure	1	0.3
TOTAL	344	100

Respondents who completed a submission form were also asked to indicate whether they thought the zoning plan provided appropriate opportunities for ecologically sustainable use, public appreciation and enjoyment. A total of 338 responses were provided to this question with 189 respondents (56%) indicating 'no' and 149 respondents (44%) indicating 'yes'.

3. Summary of comments on marine park zones

The areas of the zoning plan that received the majority of comments were:

- Point Perpendicular–Crocodile Head Sanctuary Zone
- The Docks Sanctuary Zone
- St Georges–Steamer Head Sanctuary Zone.

Although varied, comments generally reflected a clear polarisation of community views between recreational fishing and conservation interests, and between recreational and commercial fishing interests:

- Conservation groups generally requested a minimum of 30–50% of the marine park area to be included in sanctuary zones to adequately protect the biodiversity in the marine park.
- Greater conservation of the GNS was also a concern for conservation interests.
- The majority of respondents indicated that there should be no changes with the current habitat protection and general use zones.
- Several statements made by recreational fishers included:
 - reduce and/or remove all sanctuary zones
 - fishing should be allowed from the shore in all sanctuary zones
 - access for land-based fishers needs to be improved.

4. Comments on sanctuary zones

Comments on sanctuary zones have been separated into two categories; general comments relating to all sanctuary zones in the marine park (see section 4.1) and location specific comments (see section 4.2)

4.1 Sanctuary zones overall

General comments referring to sanctuary zones are categorised below:

Comment	Count
Whole marine park should be a sanctuary zone	2
Increase size/number of sanctuary zones	172
Remove all sanctuary zones	6
Increase total sanctuary zone area of marine park to 50%	43
All sanctuary zones should be made habitat protection zones	27
Decrease size/number of sanctuary zones	14
All sanctuary zones should have a habitat protection zone along the shore to allow fishing	14
No changes required	60
TOTAL	338

Comments

- All sanctuary zones should be made habitat protection zones in view of the absence of studies identifying recreational fishing as a significant threat, or any sound scientific research supporting the effectiveness of fishing bans in JBMP.
- All sanctuary zones should be reduced to allow more areas for recreational fishers.
- All sanctuary zones should have a habitat protection zone buffer zone of 100–200 m from the shoreline to allow fishing.
- Increase the area of sanctuary zones in the marine park to at least 33%.
- Increase the area of sanctuary zones to 50%.
- There is not enough scientific evidence to support such areas.
- There is no need to change sanctuary zone areas if professionals are removed completely.
- Remove sanctuary zones – the marine park should be free for all to use.
- The need for sanctuary zones is supported but their size should be reduced.
- Do not increase size of sanctuary zones – they are doing their job.
- Introduce a new sanctuary zone at Middle Ground.
- Introduce multiple use sanctuary zones.
- Introduce a new sanctuary zone at Callala Point.
- Introduce sanctuary zones over all seagrass areas with a 4-knot speed restriction.
- Sanctuary zones restrict safe boating.

- Join sanctuary zones – Huskisson to Moona Moona Creek and along to Vincentia.
- Regularly review sanctuary zones.
- Increase species protection by introducing more sanctuary zones.

4.2 Sanctuary zones by location

Not all submissions commented on all zones, therefore the number of comments for each zone does not equate to the total number of submissions received. The order in which comments are reported here does not necessarily reflect the frequency with which those comments occurred in submissions.

Hammer Head Sanctuary Zone

Comment	Count
Prefer this zone as currently stated	6
Prefer an increase in this zone	17
Prefer a decrease in this zone	4
Object to certain activities in this zone	2
Prefer habitat protection zone designation	9
Include habitat protection zone along shoreline to allow fishing	7
TOTAL	45

Comments

- Change the shape of the Hammer Head Sanctuary Zone to simplify the boundary for identification purposes.
- Fishing from Warrain Beach should be permitted.
- Introduce a habitat protection zone along the shore to allow recreational fishing.
- The zone should be changed to a habitat protection zone.

Blacks Cave Creek Sanctuary Zone

Comment	Count
Prefer this zone as currently stated	5
Prefer an increase in this zone	4
TOTAL	9

Comments

- This zone should be included in a much larger zone that extends from Blacks Cave Creek to Beecroft Head.

Drum and Drum Sticks Sanctuary Zone

Comment	Count
Prefer this zone as currently stated	6
Prefer an increase in this zone	59
Object to certain activities in this zone	3
Prefer habitat protection zone designation	1
Include habitat protection zone along shoreline to allow fishing	2
Remove zone completely	2
TOTAL	73

Comments

- The zone should be increased in size because it is too small to be of appreciable effect.
- The zone should be increased in size with an external boundary from Gum Getters Inlet to Lamond Point.
- The zone should have no restrictions at all.

Point Perpendicular–Crocodile Head Sanctuary Zone

Comment	Count
Prefer this zone as currently stated	12
Prefer an increase in this zone	75
Prefer a decrease in this zone	8
Object to certain activities in this zone	4
Prefer habitat protection zone designation	11
Include habitat protection zone along shoreline to allow fishing	15
Remove zone completely	9
TOTAL	134

Comments

- Remove the sanctuary zone completely.
- The zone should be moved/re-instated to the position proposed in the original draft zoning plan.
- The zone should be decreased in size or moved to take pressure off the area under the lighthouse when there is a north easterly wind.
- The zone should permit fishing and should be halved in size.
- The taking of pelagic species should be allowed.
- The zone should be increased north to include the coast up to Beecroft Head.
- The zone should be extended north to include the Drum and Drum Sticks.
- Land-based game fishing should be permitted.

The Docks Sanctuary Zone

Comment	Count
Prefer this zone as currently stated	6
Prefer an increase in this zone	250
Prefer a decrease in this zone	1
Object to certain activities in this zone	2
Prefer habitat protection zone designation	10
Include habitat protection zone along shoreline to allow fishing	15
Remove zone completely	1
TOTAL	285

Comments

- The zone should include a larger area to protect larger marine animals such as sharks and rays.
- The zone should be increased in size with an external boundary from Point Perpendicular to Longnose Point.
- An increase in the sanctuary zone's area is strongly recommended.
- Allow spearfishing as this is one of the only areas to take beginners safely out in a nor-easter to learn, practice and enjoy the sport in Jervis Bay.

Groper Coast Sanctuary Zone

Comment	Count
Prefer this zone as currently stated	20
Prefer an increase in this zone	23
Prefer a decrease in this zone	8
Prefer habitat protection zone designation	3
Include habitat protection zone along shoreline to allow fishing	3
Remove zone completely	9
TOTAL	66

Comments

- This zone should be removed to allow for recreational fishing.
- The zone makes little contribution to the marine park but takes away lots of fishing opportunities for young kids to fish safely on this shoreline.
- Decrease the size of the zone and make it available for younger, older and disabled fishers for safe rock platform fishing.

Hare Bay Sanctuary Zone

Comment	Count
Prefer this zone as currently stated	19
Prefer an increase in this zone	31
Prefer a decrease in this zone	5
Objection to certain activities in this zone	3
Prefer habitat protection zone designation	7
Include habitat protection zone along shoreline to allow fishing	2
Remove zone completely	1
TOTAL	68

Comments

- Allow fishing at Red Point.
- Ban PWCs and jet skis in close proximity to beaches.
- This is a highly sensitive seagrass habitat and should be increased in size so that the boundary extends from Wowly Creek to Longnose Point.
- The zone should be made a habitat protection zone.
- Any increase in this area will seriously affect small boat activity (recreational).
- People should be able to fish from the shore (beach) at Carama Inlet.
- The zone is too extensive.
- The zone should be increased in size to protect all seagrass beds – the boundary should be from Red Point to Dart Point.
- Anchoring should be allowed over sandy areas.

Wowly Gully sanctuary zone

Comment	Count
Prefer this zone as currently stated	2
Prefer an increase in this zone	1
Prefer habitat protection zone designation	2
TOTAL	5

Comments

- Dredge Wowly Gully to allow swimming for children.
- Re-open the area for prawning.
- Make this zone a habitat protection zone to allow bait collection.

Huskisson Sanctuary Zone

Comment	Count
Prefer this zone as currently stated	9
Prefer an increase in this zone	18
Prefer a decrease in this zone	5
Prefer habitat protection zone designation	2
Include habitat protection zone along shoreline to allow fishing	4
Remove zone completely	5
TOTAL	43

Comments

- Huskisson Sanctuary Zone blocks development in the town area.
- The zone should be increased as it does not provide protection for fish leaving Currumbene Creek.
- The zone should be rezoned as a special purpose zone to allow for future consideration of a marina.
- Fishing should be allowed from the shore out to 50 metres.
- Extend the zone along the shore to Moona Moona Creek.

Currumbene Creek Mudflats Sanctuary Zone

Comment	Count
Prefer this zone as currently stated	7
Prefer an increase in this zone	10
Prefer a decrease in this zone	1
Prefer habitat protection zone designation	1
Remove zone completely	1
TOTAL	20

Comments

- The line from boundary marker points 11D to 11C should continue across to the mudflats to increase this zone, in order to protect Myola Spit.
- Extend the zone so that it links with the Huskisson Sanctuary Zone.
- The zone needs to be bigger and should be better protected against illegal activities.

Upper Currumbene Creek Sanctuary Zone

Comment	Count
Prefer this zone as currently stated	6
Prefer an increase in this zone	3
Prefer habitat protection zone designation	2
TOTAL	11

Comments

- Re-open the area to fishing

Moona Moona Creek Sanctuary Zone

Comment	Count
Prefer this zone as currently stated	4
Prefer an increase in this zone	2
TOTAL	6

Hyams Beach Sanctuary Zone

Comment	Count
Prefer this zone as currently stated	18
Prefer an increase in this zone	9
Prefer a decrease in this zone	5
Include habitat protection zone along shoreline to allow fishing	2
TOTAL	34

Comments

- The zone is too large.
- Extend the zone to include the beach.

Bowen Island Sanctuary Zone

Comment	Count
Prefer this zone as currently stated	5
Prefer an increase in this zone	41
Prefer a decrease in this zone	1
Prefer habitat protection zone designation	1
Remove zone completely	3
TOTAL	51

Comments

- The whole of Bowen Island should be protected.
- Enlarge the zone to protect the GNS site.
- This is too small an area to be of any use as a sanctuary zone.
- Allow trolling with lures.

St Georges–Steamer Head Sanctuary Zone

Comment	Count
Prefer this zone as currently stated	14
Prefer an increase in this zone	231
Prefer a decrease in this zone	6
Object to certain activities in this zone	1
Prefer habitat protection zone designation	1
Include habitat protection zone along shoreline to allow fishing	5
Remove zone completely	4
TOTAL	262

Comments

- The zone should be extended north to an area north of Stony Creek to include a wider range of biodiversity.
- The zone needs to be larger to protect the reef.
- The zone should be moved/re-instated to the position proposed in the original draft zoning plan and include the seal haul-out area.
- The taking of pelagic species should be allowed.
- The zone needs to be bigger to protect intermediate reef habitat.
- The boundary line from Steamers Head should be moved westward so it starts at Brooks Rock.

5. Comments on habitat protection zones

Comments on habitat protection zones have been separated into two categories: general comments relating to all habitat protection zones in the marine park (see section 5.1) and location specific comments (see section 5.2).

5.1 Habitat protection zones overall

General comments relating to habitat protection zones are categorised below:

Comment	Count
Whole park should be a habitat protection zone	5
Increase size/number of habitat protection zones	6
Decrease size/number of habitat protection zones	1
Remove all habitat protection zones and replace with general use zones	4
No changes required	87
TOTAL	103

Comments

- Habitat protection zones have no conservation value.
- There should be no reduction in habitat protection zones except due to an expansion of sanctuary zones.
- There should be no aquaculture in habitat protection zones.
- All areas should remain the same.
- Ban all commercial fishing.
- Habitat protection zones should remain as a buffer around existing sanctuary zones and any new sanctuary zones.
- There should be no habitat protection zones – the park should be free for everyone to use.
- Habitat protection zones should be left as they are but not increased.
- All habitat protection zones should be larger.

5.2 Habitat protection zones by location

Not all submissions commented on all zones, therefore the number of comments for each zone does not equate to the total number of submissions received. The order in which comments are reported here does not necessarily reflect the frequency with which those comments occurred in submissions.

Kinghorn Point

Comment	Count
Prefer this zone as currently stated	0
Prefer an increase in this zone	0
Prefer a decrease in this zone	0
Object to certain activities in this zone	0
Change zone designation	0

Currarong

Comment	Count
Prefer this zone as currently stated	2
Change zone designation	8
TOTAL	10

Comments

- 'Home Reef' at Currarong requires research/monitoring and protection.
- Currarong to Honeymoon Bay should all be a sanctuary zone (3 comments).
- Include Currarong Bommie and the surrounding intermediate reef habitat in a sanctuary zone.

Point Perpendicular–Cape St George

Comment	Count
Change zone designation	1
Make Stony Creek a sanctuary zone	9
TOTAL	10

Jervis Bay

Comment	Count
Prefer this zone as currently stated	4
Object to certain activities in this zone	2
Change zone designation	4
TOTAL	10

Comments

- Make Tapalla Point a surfing reserve with Aboriginal site protection.
- Prohibit spearfishing, line fishing and powered vessels in Honeymoon Bay.
- Implement seasonal or sanctuary zone protection around Dent Rock to protect Port Jackson sharks.
- All of Jervis Bay should be a sanctuary zone.

Currambene Creek

Comment	Count
Object to certain activities in this zone	1
Change zone designation	6
TOTAL	7

Comments

- Limit human disturbance on Currambene sand spit to protect the important shorebird roosting area.
- Do not dredge Currambene Creek.
- Protect Myola Spit.
- Construct a breakwall on the north side of Currambene Creek.

Hyams Beach

Comment	Count
Prefer an increase in this zone	1
Remove zone completely	3
Object to certain activities in this zone	9
Change zone designation	5
TOTAL	17

Comments

- Prohibit collecting and lobster and crab trapping.
- Allow line fishing only in this zone.
- Do not permit anchoring in this zone.
- Prohibit collecting from the shore at Hyams Beach.
- Re-zone the area as a sanctuary zone.
- Remove the spearfishing ban.

Steamers Beach

Comment	Count
Prefer this zone as currently stated	0
Prefer an increase in this zone	0
Prefer a decrease in this zone	0
Object to certain activities in this zone	0
Change zone designation	0

Wreck Bay

Comment	Count
Prefer this zone as currently stated	2
Prefer an increase in this zone	1
Object to certain activities in this zone	1
TOTAL	4

Comments

- Make Wreck Bay a surfing reserve with Aboriginal site protection.
- Increase the size of the zone to include the adjacent general use zone.

6. Comments on general use zones

Comments on general use zones have been separated into two categories: general comments relating to all general use zones in the marine park (see section 6.1) and location specific comments (see section 6.2)

6.1 General use zones overall

General comments relating to general use zones are categorised below:

Comment	Count
All general use zones to be made habitat protection zones	6
Increase size of general use zones	9
No changes required	94
TOTAL	109

Comments

- There should be no expansion of general use zones.
- Remove commercial fishing from the zone.
- There seems to be no real purpose for general use zones in this zoning plan.
- All general use zones should be made habitat protection zones.
- Introduce some general use zones inside Jervis Bay to allow greater usage.
- Increase the number and variety of general use zones.

6.2 General use zones by location

Not all submissions commented on all zones, so the number of comments for each zone does not equate to the total number of submissions received. The order in which comments are reported here does not necessarily reflect the frequency with which those comments occurred in submissions.

There were a large number of National Parks Association and Nature Conservation Council form letter submissions that suggested buying back all commercial fishing licences from the marine park. While not specifically referring to zoning, it is likely this would result in changing general use zones to habitat protection or sanctuary zones.

Crookhaven Bight

Comment	Count
Prefer this zone as currently stated	2
Prefer an increase in this zone	1
Prefer a decrease in this zone	1
Object to certain activities in this zone	3
Change zone designation	3
TOTAL	10

Comments

- This should be a habitat protection zone.

Wreck Bay

Comment	Count
Prefer this zone as currently stated	1
Object to certain activities in this zone	1
Change zone designation	2
TOTAL	4

Comments

- This should be a habitat protection zone.

7. Comments on special purpose zones

Comments on special purpose zones have been separated into two categories: general comments relating to all special purpose zones in the marine park (see section 7.1) and location specific comments (see section 7.2).

7.1 Special purpose zones overall

General comments relating to special purpose zones are categorised below:

Comment	Count
Remove all special purpose zones	1
Introduce special purpose zone for a marina development	3
No changes required	99
TOTAL	103

7.2 Special purpose zones by location

Not all submissions commented on all zones, therefore the number of comments for each zone does not equate to the total number of submissions received. The order in which comments are reported here does not necessarily reflect the frequency with which those comments occurred in submissions.

Huskisson Wharf

Comment	Count
Prefer this zone as currently stated	13
Increase size of zone to allow for a boat harbour	6
Object to certain activities in this zone	3
TOTAL	21

Comments

- Limit mooring.
- There should be no expansion of the existing zone to accommodate marina development.
- The zone should be extended further upstream to Woollamia boat ramp to accommodate additional activity.
- More policing is required.
- Maintain the minimum size required for current operations.
- The area appears to be working well in its current state.

HMAS Creswell

Comment	Count
Prefer this zone as currently stated	9
Prefer an increase in this zone	1
Object to certain activities in this zone	4
TOTAL	14

Comments

- Anchoring should be permitted within this zone in cooperation with naval activities.
- The area appears to be working well in its current state.

8. Comments on permitted activities within Jervis Bay Marine Park

The zoning plan review also sought comment on the control of specific activities permitted in the Marine Park Amendment (Jervis Bay) Regulation 2002.

Comments on individual activities have been summarised into categories in the tables below. Where the comments could not be summarised into an existing category, that comment has been reproduced below the corresponding table.

8.1 Anchoring and moorings

Comment	Count
Agree with zoning plan (no details provided)	1
Disagree with zoning plan (no details provided)	1
Ambiguous	1
Allow anchoring in all areas	2
Allow as per existing regulations	2
Increase number of public moorings (various locations)	38
Prohibit permanent moorings in Jervis Bay	1
Prohibit anchoring in sanctuary zones and other sensitive areas	2
Allow anchoring at the HMAS Creswell special purpose zone	6
Allow anchoring in the Hare Bay sanctuary zone	5

Comments

- Allow yacht clubs to install permanent racing marks in habitat protection zones.
- Prohibit anchoring in the Hyams Beach habitat protection zone.
- Reduce anchoring at dive sites due to impacts.
- Restrict anchoring of boats at Cabbage Tree Beach to offshore areas to reduce conflict with swimmers.
- Remove anchoring prohibition at The Tubes.
- Limit expansion of moorings.

8.2 Aquaculture

Comment	Count
Agree with zoning plan (no details provided)	4
Prohibit aquaculture in habitat protection zones	1
Reduce area permitted for aquaculture	16
Consultation required after each lease/licence application	1
Environmental concerns with this activity	1
Prohibit aquaculture	10
Allow/promote aquaculture within the marine park	9

8.3 Collecting (scientific, educational, bait, aquarium and seaweed)

Comment	Count
Agree with zoning plan (no details provided)	2
Allow areas for bait collecting	5
Allow regulated/permitted collection	4
Prohibit collecting	7
Other	6

Comments

- Allow collection of all non-threatened shell species, limit to five per person.
- There should be no restrictions on the collection of dead shells.
- Bait collection on rock platforms may disturb sooty oystercatcher forage and roosting sites.

8.4 Commercial fishing

Comment	Count
Agree with zoning plan (no details provided)	2
Allow commercial fishing – general comment	2
Allow commercial fishing as per existing regulations	3
Implement seasonal or time and area closures	1
Reduce commercial fishing	15
No commercial fishing allowed in habitat protection zones	5
Prohibit all forms of commercial fishing in marine park	71
Allow all Region 6 ocean haulers to operate in the marine park	6
Prohibit ocean hauling	9
Prohibit purse seine/lift nets	1
Prohibit trawling	5
Buy back all commercial fishing licences	207
Prohibit certain commercial fishing activities at specific locations	20
Lift the 300-metre closure at the southern end of Callala Beach for beach hauling	2
Increase regulation/enforcement	1
Address the issue of permit transferability (ocean haul)	2
Increase public education and awareness of the sustainability of beach hauling and the right to operate in the marine park	2

Comments

- Allow purse seining of bait for commercial use to continue.
- Beach hauling should be undertaken out of public view.
- Allow all beach haulers to operate in the marine park or be fair and offer excluded Region 6 fishers a buy-out.
- Purse seine activity should be allowed in all habitat protection zones and general use zones.
- Move purse seine fishing area away from Bowen Island to protect penguin feeding grounds.

8.5 Cruise ships

Comment	Count
Agree with zoning plan (no details provided)	3
Ambiguous	1
Allow as per existing regulations	2
Prohibit access/visitation in the marine park	212

8.6 Domestic/companion animals

Comment	Count
Agree with zoning plan (no details provided)	3
Ambiguous	1
Allow in all areas	1
Allow designated areas/allow if restrained and supervised	3
Allow as per existing regulations	2
Increased regulation and enforcement	3
Prohibit dogs on beaches	1

8.7 Fish feeding/cleaning

Comment	Count
Agree with zoning plan (no details provided)	3
Prohibit fish feeding	2
Other	1

Comments

- There are waste problems with fish cleaning.

8.8 Hovercraft

Comment	Count
Agree with zoning plan (no details provided)	1
Ambiguous	1
Prohibit access/use in the marine park	207

Comments

- Allow hovercraft with a speed restriction of 10 knots within 100 metres of the shore.

8.9 Personal watercraft

Comment	Count
Agree with zoning plan (no details provided)	2
Ambiguous	1
Allow in designated areas	5
Implement speed restrictions	2
Increase regulation and enforcement	8
Prohibit PWCs	230
Move PWCs from Hyams Beach habitat protection zone south to Sailors Beach	4

Comments

- There is concern about the interaction between jet skis and dolphins.
- Stop PWCs harassing marine mammals.
- Allow PWC use with a speed restriction of 10 knots within 100 metres of the shore.

8.10 Recreational fishing

Comment	Count
Agree with zoning plan (no details provided)	2
Lack of scientific basis for marine park/sanctuary zones	8
Replace/reduce zone restrictions with seasonal closures/stricter bag and size limits	4
Restrict recreational fishing activities	6
Review recreational fishing restrictions	2
Allow recreational fishing	17
Allow catch and release fishing	5
Implement seasonal or time and area closures	4
Consistency required between JBMP and Booderee National Park regulations	2
Prohibit fishing competitions	236
Improve access for land-based game fishers	113
Prohibit recreational fishing	1
Introduce artificial reefs	25
Support the development of a recreational fisher code of conduct	94
Undertake fish stocking activities	3

Comments

- Consider land and boat access for recreational fishers when developing zoning plans.
- Stop marlin fishing.
- One person is opposed to artificial reefs.

8.11 Spearfishing

Comment	Count
Agree with zoning plan (no details provided)	1
Restrict spearfishing activities	14
Continue with spearfishing restrictions in Hyams Beach habitat protection zone	2
Allow spearfishing (general comment)	6
Spearfishing to be restricted to more than 50 metres from shore/ban competitions	199
Allow spearfishing in the Hyams Beach habitat protection zone	13
Prohibit spearfishing competitions in the marine park	29
Prohibit spearfishing	15
Other	1

Comments

- Allow spear guns to be transported through Commonwealth waters and over Commonwealth land.

8.12 Species that may be taken from habitat protection zones

Comment	Count
Agree with regulations (no details provided)	14
Disagree with regulations (no details provided)	2
Ambiguous	1
Protection required for all shark species – remove sharks from list of species that can be taken in the marine park	8
Protection required for urchins and cuttlefish	4
Protection required for all sharks and rays	219
Protection required for sharks, rays, boarfish and foxfish	10
Other	1

Comments

- Species permitted to be taken from habitat protection zone should be the same as NSW Fisheries regulations.
- Increase protection by removing species from the list of species that can be collected in habitat protection zones.

8.13 Threatened species

Comment	Count
Agree with zoning plan (no details provided)	3
1500-metre radius sanctuary zone required around GNS sites	37
Ambiguous	1
More protection required for GNS	12
Current sanctuary zones inadequate for GNS protection	5
Develop localised recovery plans for specific species	3

8.14 Vehicle access

Comment	Count
Agree with zoning plan (no details provided)	3
Allow beach access for elderly and/or infirm	2
Allow in designated areas	2
Prohibit all vehicle access	8
Prohibit commercial fishers from beaches	5

9. General comments from submissions

Many submissions commented on issues not covered by zoning arrangements or other aspects of the regulations. These comments have been categorised and are summarised below.

9.1 Management

Comment	Count
Extend the boundary of the marine park to three nautical miles	38
Decriminalise the fines for fishing in a sanctuary zone	9
Collaboration and consistency required between State and Commonwealth agencies	53
Increase public education and community awareness	15
More compliance required	31
More science and monitoring required	26
Signage and marking of zones is inadequate	23
More consultation required	4
Address catchment issues to protect the marine environment	107
Regulate/licence/control scuba diving operations	8
More research required on conservation and sustainable use benefits of marine protected areas	178
Remove military operations from Beecroft Head as they are incompatible with the marine park	6

Comments

- Improve the relationship between MPA staff and recreational fishers and clubs.
- Include GPS coordinates for all sanctuary zone marker buoys in brochures.
- Restrict removal of all plant and animal species.
- Show the public the scientific information showing that marine parks work.
- Hold an open forum discussion on science.
- All species should be protected.
- Include a spearfishing representative on the Marine Park Advisory Committee.
- Consider lifting bans when fish stocks increase.
- Limit complexity of zoning and management arrangements.
- Train local youth for employment.
- Provide public facilities such as bins, signs and a toilet at The Tubes.
- Restrict operators from dolphin watching in the bay.
- Allow for discharge of reclaimed water at Plantation Point.
- People currently know the rules, any changes to the zoning plan will result in more confusion.

- The zoning plan has only been in place for five years, more time is needed to see if it is working.
- Increase funding.
- Provide the opportunity to comment if any zone changes are proposed for estuaries.
- More flexibility is required in the permitting of charter boat operations.
- The Advisory Council on Recreational Fishing (ACoRF) should be represented on the Marine Park Advisory Committee.
- Undertake active management to ensure protection of heritage values associated with the Department of Defence.
- Introduce a new zone type – special habitat protection zone –which allows recreational fishing but not commercial fishing.
- Support protective zoning of estuaries as sanctuary zones or habitat protection zones.
- Use special habitat protection zones as an alternative to sanctuary zones in certain circumstances.

9.2 Boating facilities

Comment	Count
Boat harbour/marina is needed at Huskisson (Huskisson Sanctuary Zone or Huskisson Wharf special purpose zone)	21
Provide a marina and/or safe boating facilities	40
Opposed to marina in marine park	241
Extend Callala Bay jetty	3
Dredge Currambene Creek for vessel access	4
Huskisson Wharf to be made larger as it is too small and very busy	9
Better management of Huskisson Wharf boating infrastructure required	2
Allow access to HMAS Creswell facilities for a small fleet of tourism craft	2

Comments

- Some are not in favour of rezoning Huskisson Sanctuary Zone for a marina given a lack of information on possible impacts.
- MPA should be more active in resolving boat facility issues.
- Huskisson Sanctuary Zone should be rezoned to allow for the development of a marina.

9.3 Fishing (recreational/commercial)

Comment	Count
Allow/improve access for traditional fishing by indigenous people	4
Need safe areas for new spearfishers in closed waters	7
Introduce rotational fishing closures and/or sanctuary zones	5
Allow trolling for pelagic species (variety of sanctuary zones mentioned)	5
Prohibit fishing activities (commercial and recreational) during spawning times	8

Comments

- Make greater use of 'recreation only' fishing zones.
- Increase the abalone bag limit.
- Lift the ban on taking abalone in the marine park.

9.4 Other

- Large shark heads have been seen dumped at Gum Getters Inlet.
- Fully protect beach habitats around Huskisson/Callala Bay.
- Prohibit the scraping of the seabed.
- Keep the experience of being able to just 'go fishing'.
- Ban plastic, especially bait bags.
- The council should notify the MPA when sewage spills occur from the pump station at Vincentia.

Appendices

Appendix 2a – Form letter generated by the Coastal Rights Association

From:

Sent: Friday, 23 May 2008 2:45 PM

To: jervis.bay@mpa.nsw.gov.au

Subject: Submission: Jervis Bay Marine Park zoning plan review

Submission : Jervis Bay Marine Park zoning plan review

Currently only 20% of the Jervis Bay Marine Park is zoned as a sanctuary zone. This must not be increased. There is NO actual scientific data that supports the view that up to 50% of all marine waters should have this top level of protection in order for ecosystems to regenerate and be self sustaining. Increasing the Sanctuary Zone to 50% together with increased protection within the park is being put forward by minority eco groups, hell bent on restricting the use of our coastal waters from ordinary Australian citizens.

The only protection issues that I believe needs a 'definitive' and proper scientific study, is the impact of commercial fishing, netting, taking practices and their impact on our coastal waters, as the recreational impact in comparison is negligible.

The expansion of the sanctuary zones to 50% must not be considered a priority to protect marine life without proper and definitive consultation and scientific evidence which at this time 'Does Not Exist'! The only people stating that this evidence does exist, is minority green groups that do not even venture into the parks, but have used their influence to conjure up 'mythical' studies that have NO scientific basis and when asked to produce them, cannot! They are a strong and well organised lobby group fighting for their own cause and are using the media to manipulate their views on mostly uniformed people who are largely unaware of the 'True' facts regarding our coastal waters and the impacts of recreational boating and fishing.

Recreational fishing is one of the largest participant sports in the world and mostly undertaken by people that want to see sustainable relationships with their own environment and are well aware of the results of over fishing and other environmental issues. The use of catch and size restrictions on fishing is having a positive effect in returning fish stocks and the current management practices need to be made more public and policed in order to get the message across to the broader populace rather than enlarging protection zones that will have a minimal effect on the real issues.

There should be a uniform management plan for the long term sustainability of our water ways with both Commonwealth and State authorities collaborating but with the best interests of the majority of it's users in mind and not just the whims of right winged minority groups who, at the end of the day, rarely even venture into these areas anyway.

NSW Marine Parks Authority vision:

Locations and boundaries for marine parks and the zoning arrangements within them will have been derived from thorough scientific assessments of all available information and data, to provide the best combination of areas for the conservation of biodiversity.

This vision is yet to be fulfilled. However, increasing sanctuaries to 50% of the Marine Parks would only go towards fulfilling the aspirations of a dedicated minority.

I call on you to carefully consider the impacts of increasing these zones without further public comment.

Thank you for your consideration

Yours Sincerely

Name :

Email :

Postal address :

Appendix 2b – Form letter generated by the Nature Conservation Council

From:

Sent: Tuesday, 20 May 2008 10:05 AM

To: jervis.bay@mpa.nsw.gov.au

Subject: Submission: Jervis Bay Marine Park zoning plan review

Submission : Jervis Bay Marine Park zoning plan review

Currently only 20% of the Jervis Bay Marine Park is zoned as a sanctuary zone. This must be increased. According to scientists, up to 50% of all marine waters should have this top level of protection in order for ecosystems to regenerate and be self sustaining. Increasing the sanctuary zone to 50% together with increased protection within the park is a small step to achieving this.

The 50% of waters that should be protected in sanctuary zones must include a mix of habitat types such as seagrass, rocky reefs and sand to allow maximum protection of a broad range of species.

Increase the sanctuary zone to 50%

It is important to note that the percentages above refer to the entire ocean, not only to areas included in marine parks. With this in mind, a call for 50% of the marine parks as sanctuary zones is only a first step towards a sustainable network of protected areas.

The expansion of the sanctuary zones to 50% must be a priority to protect marine life, conserve marine biodiversity and to maintain valuable ecosystems.

Of particular and immediate concern is the threat to the Grey Nurse Shark posed by inadequate sanctuary zones around critical habitat sites. To provide proper protection for this endangered species, all known Grey Nurse congregation sites must be protected by at least a 1500 metre radius sanctuary zone.

Increase protection within the park

- No marina should be allowed in Jervis Bay.
- The expansion of sanctuary zones must be a priority. To protect marine life 50% of the Park should be declared sanctuary zones.

- All sharks and rays should be fully protected within the park.
- All seagrass beds within the park should be included in sanctuary zones and a speed limit of 4 knots introduced to those areas.
- Extend the Park boundary, including Sanctuary zones, to 3 nautical miles from the shoreline.
- There is a need to link some sanctuary zones within Jervis Bay. 1. From Longnose Point sanctuary zone to Point Perpendicular sanctuary zone. 2. From the existing sanctuary zone south of Stoney Creek to the end of reef adjacent to Stoney Creek. 3. From the existing sanctuary zone at Point Perpendicular to Beecroft Head.
- All fishing and spearfishing competitions should be banned in the park.
- Spearfishing should not be permitted from the shoreline to a band of 50m into the bay.
- A buyback of all commercial fishing licences should be implemented.
- There is no support for the use of hovercraft, PWC vessels and cruise ships in the marine park.
- There should be a uniform management plan for the park with Commonwealth and State authorities collaborating.

NSW Marine Parks Authority vision:

‘Locations and boundaries for marine parks and the zoning arrangements within them will have been derived from thorough scientific assessments of all available information and data, to provide the best combination of areas for the conservation of biodiversity.’

This vision is yet to be fulfilled. However, an increase of sanctuaries to 50% of the marine parks would go a long way to achieving it.

I call on you to significantly increase the percentage of the marine park that is protected in sanctuary zones and that all habitat types have protection under the zoning plan.

Thank you for your consideration

Yours Sincerely

Name:

Email:

Postal address:

Appendix 2c – Form letter generated by the National Parks Association

From:

Sent: Wednesday, 21 May 2008 7:29 PM

To: jervis.bay@mpa.nsw.gov.au

Subject: Jervis Bay Marine Park Review Submission

Submission: Jervis Bay Marine Park Review

I am writing to urge you to support an increase in fully protected areas or sanctuary zones within the Jervis Bay Marine Park (JBMP). An increase in sanctuary protection for this park will bring New South Wales closer to world targets of 20-30% full protection of the oceans by 2012 and put in place better long-term management of our marine waters. At present, a mere 6.7% of NSW marine waters are fully protected from fishing activities.

Jervis Bay Marine Park contains a wide variety of marine habitats and is home to unique species such as the weedy sea-dragon, eastern blue devil fish, bottlenose dolphin, the endangered little penguin and the endangered grey nurse shark. The park also contains at least four species of seagrass and has some of the most extensive seagrass beds on the NSW coast. Yet, a variety of extractive activities such as commercial and recreational fishing, continue to place undue pressure on the park and inadequate protection exists for many of the species within the park.

I strongly support the following actions for the Jervis Bay Marine Park during this review process:

1. Increased sanctuary zone protection as a matter of priority.

Currently, only 20% of the JBMP is fully protected. Sanctuaries have been shown to increase the numbers, species and size of marine life in these fully protected areas. I support at least a 33% sanctuary zone percentage for the JBMP. This level of protection would be much closer to the level of protection of the Great Barrier Reef Marine Park and Ningaloo Marine Park.

Such sanctuary protection must include the linkage of the following sanctuary zones within the park:

- From Longnose Point sanctuary zone to Point Perpendicular sanctuary zone.
- From the existing sanctuary zone south of Stoney Creek to the end of reef adjacent to Stoney Creek.
- From the existing sanctuary zone at Point Perpendicular to Beecroft Head.

In the long term I also support an extension of the park boundary and associated sanctuary zones, to 3 nautical miles from the shoreline.

2. Increased additional protection within the park.

Within the JBMP, the following actions should be taken:

- All sharks and rays should be fully protected
- All fishing and spearfishing competitions should be banned and spearfishing should not be permitted from the shoreline to a band of 50m into the bay
- A buyback of all commercial fishing licenses should be implemented
- All seagrass beds within the park should be included in sanctuary zones and a speed limit of 4 knots introduced to those areas
- Hovercraft, PWC vessels and cruise ships should be banned
- No marina should be allowed.

This is the first review for the Jervis Bay Marine Park since its creation 10 years ago and another review will not occur before 2018. It is therefore critical that the NSW Government act now to save our marine waters and safeguard them for the future.

Yours Sincerely

Personal comment from sender:

Appendix 2d – Jervis Bay Marine Park Zoning Plan Review Submission Form



Jervis Bay Marine Park zoning plan review: submission form

This review aims to determine whether the current zoning plan remains appropriate for conserving marine biodiversity and habitats, and maintaining ecosystems, while providing for public appreciation, understanding, enjoyment, and ecologically sustainable use.

By completing this submission form, you will be contributing to the review of the zoning plan for Jervis Bay Marine Park.

Important information

Please ensure this submission reaches the Marine Parks Authority by **2 June 2008**.

You will need to refer to the current Jervis Bay Marine Park Zoning Plan. Call 1300 361 967 or email jervis.bay@mpa.nsw.gov.au for a copy, or you can download it from www.mpa.nsw.gov.au/jbmp.html.

Please complete the form, and return it postage paid 'fold, staple and send' by **2 June 2008** to the Jervis Bay Marine Park office. Fold it up and tape it so the reply paid slip is at the front. The reply paid slip is the last page of this document.

If you wish to make additional comments please attach additional pages.

Download this form from www.mpa.nsw.gov.au to:

- fax it to (02) 4441 7756
- scan pages you have completed and email them to jervis.bay@mpa.nsw.gov.au with 'Review submission form' in the subject line.

If you would like assistance in completing the form, or would like to discuss any marine park planning or management issue, please contact the Jervis Bay Marine Park office on (02) 4441 7752 or email jervis.bay@mpa.nsw.gov.au. For further information visit www.mpa.nsw.gov.au.

For the purposes of the *NSW Privacy and Personal Information Act 1998*, any comments on this form, including your personal details, will be a matter of public record and available for public inspection on request to the NSW Marine Parks Authority. If you wish to make a confidential submission, please answer 'yes' to the first question.



Submission form

Please mark appropriate boxes with a cross

1. **Confidential submission** – Yes No

2. **Contact details** – optional but please complete your postcode

Dr/Mr/Mrs/Ms (circle as appropriate)

Surname

First name

Address

Suburb State

Postcode* (*this is mandatory)

Phone Fax

Email

Organisation/affiliation/business name (if applicable)

3. Which age group are you in? – optional

- 0-17 years
- 18-24 years
- 25-34 years
- 35-44 years
- 45-54 years
- 55-64 years
- over 65 years

4. What are your main interests in the marine park?

Please number the boxes in order of importance, where 1 equals 'most important' and 5 equals 'least important'. Only number activities you are interested in.

- Recreational fishing
- Spearfishing
- Snorkelling
- Scuba diving
- Conservation
- Wildlife observation
- PWC/water sports
- Charter fishing
- Commercial fishing
- Beach activities
- Swimming
- Surfing
- Kayaking/canoeing
- Recreational boating
- Scenic amenity

Other (please specify)

5. Overall, how would you describe your view of conserving the Jervis Bay Marine Park?

- Strongly in favour In favour Neutral Against Strongly against
Don't know/not sure

6. How strongly do you support the sanctuary zones in the Jervis Bay Marine Park?

- Strongly in favour In favour Neutral Against Strongly against
Don't know/not sure

7. Do you think the zoning plan provides appropriate opportunities for ecologically sustainable use, public appreciation and enjoyment?

- Yes No

Please provide information on the following zones shown on the map on page 7

How to fill in this form

Changes suggested to area?	Supporting comments
Area name: this row is colour coded depending on how the zone is coloured on the map. For example, sanctuary zones are pink on the map so this row would be pink if the zone was a sanctuary zone.	
Yes <input type="checkbox"/> No <input type="checkbox"/> Put a cross in the 'yes' box if you think the size, area or designation of the zone should be changed and in the 'no' box if you think the area, size or designation of the zone does not need to be changed	Please be specific about why this zone should stay the same or be changed.

8. Sanctuary zones

Sanctuary zone areas are marked pink on the map. These zones provide the highest level of protection – removal or harm of any plants or animals is prohibited.

Comment on as many of these zones as you wish. In the pink rows, please name the area you are commenting on.

Changes suggested to area?	Supporting comments
Area name:	
Yes <input type="checkbox"/> No <input type="checkbox"/>	
Area name:	
Yes <input type="checkbox"/> No <input type="checkbox"/>	
Area name:	
Yes <input type="checkbox"/> No <input type="checkbox"/>	

Changes suggested to area?		Supporting comments
Area name:		
Yes <input type="checkbox"/>	No <input type="checkbox"/>	
Area name:		
Yes <input type="checkbox"/>	No <input type="checkbox"/>	
Area name:		
Yes <input type="checkbox"/>	No <input type="checkbox"/>	

9. Habitat protection zones

Habitat protection zone areas are marked yellow on the map. These zones conserve biodiversity by reducing high impact activities. Line fishing, spearfishing, lobster and crab trapping, and collecting are generally permitted, with restrictions in some areas.

Comment on as many of these zones as you wish. In the yellow rows, please name the area you are commenting on.

Changes suggested to area?		Supporting comments
Area name:		
Yes <input type="checkbox"/>	No <input type="checkbox"/>	
Area name:		
Yes <input type="checkbox"/>	No <input type="checkbox"/>	

10. General use zones

General use zone areas are marked light blue on the map. These zones provide for a wide range of activities including commercial and recreational fishing.

Comment on as many of these zones as you wish. In the blue rows, please name the area you are commenting on.

Changes suggested to area?	Supporting comments
Area name:	
Yes <input type="checkbox"/> No <input type="checkbox"/>	
Area name:	
Yes <input type="checkbox"/> No <input type="checkbox"/>	

11. Special purpose zones

Special purpose zone areas are marked dark blue on the map. These zones allow for management of areas for a particular purpose such as marine infrastructure. The zone's purpose is included with its name in the blue rows. Please note that fishing activities permitted in these zones are the same as in habitat protection zones.

Comment on as many of these zones as you wish.

Changes suggested to zone?	Supporting comments
Huskisson Wharf – designated for the management of boating and wharf related activities	
Yes <input type="checkbox"/> No <input type="checkbox"/>	
HMAS Creswell – designated for the safe operation of naval infrastructure. No anchoring is permitted in this zone.	
Yes <input type="checkbox"/> No <input type="checkbox"/>	

12. Commenting on activities

The zoning plan determines which of the following activities are allowed in different zones:

- Anchoring/moorings
- Aquaculture
- Collecting (scientific, educational, bait, aquarium)
- Collecting seaweed
- Commercial fishing
- Cruise ships
- Domestic/companion animals
- Fish feeding/cleaning
- Hovercraft
- PWC
- Recreational fishing
- Spearfishing
- Species that may be taken from habitat protection zones
- Threatened and protected species
- Vehicle access
- Other

Do you have any comments on any of these activities?

Jervis Bay Marine Park

Activity	Comment

13. The zoning plan restricts the taking of some plant and animal species from the marine park.

These restrictions are listed in the Jervis Bay Marine Park Zoning Plan Regulation, and in tables 1 and 2 of the zoning plan user guide (see www.mpa.nsw.gov.au).

Do you have any comments on the plant and animal species restrictions?

.....

.....

.....

.....

.....

14. General comments

Please provide any further comments here.

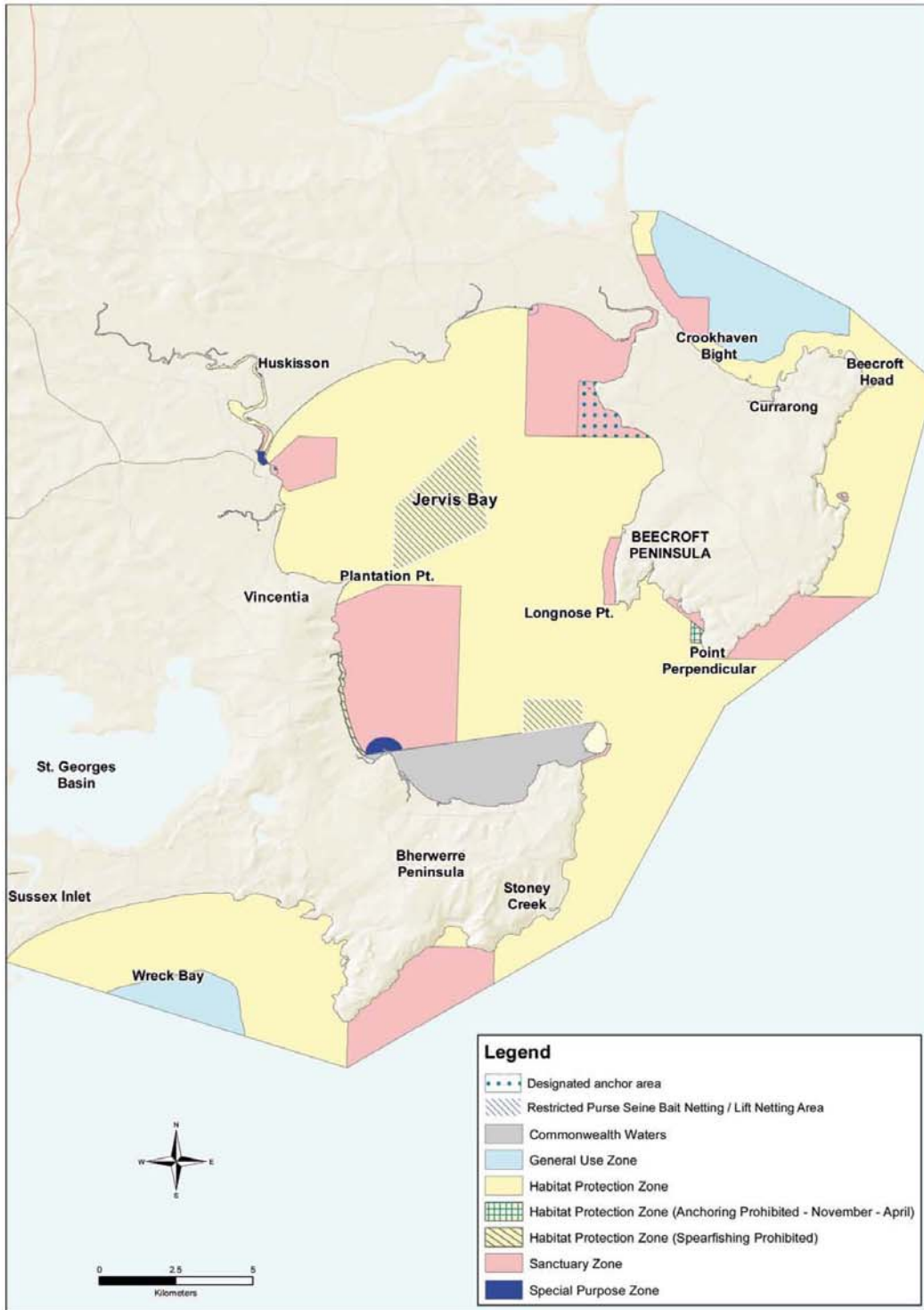
.....

.....

.....

.....

Thank you for your time and effort in completing this survey. Your responses will assist us in reviewing the zoning plan for Jervis Bay Marine Park.



Jervis Bay Marine Park Zoning Plan